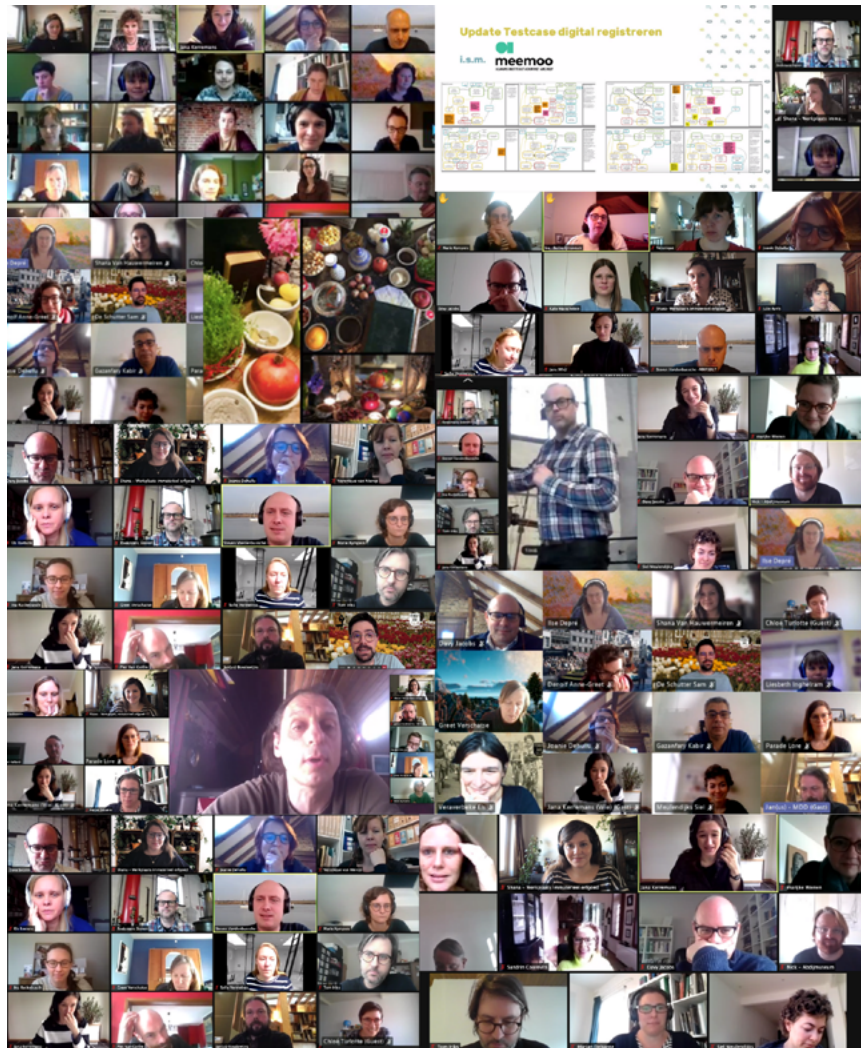


Plans for the future: ICH included in museums

A pilot project on integrating living heritage in museum's collection planning and management



WORKSHOP
INTANGIBLE
HERITAGE ^{BE}

Conference Agenda

Friday 24 September 2021

Table of contents

02

03

04

05

10

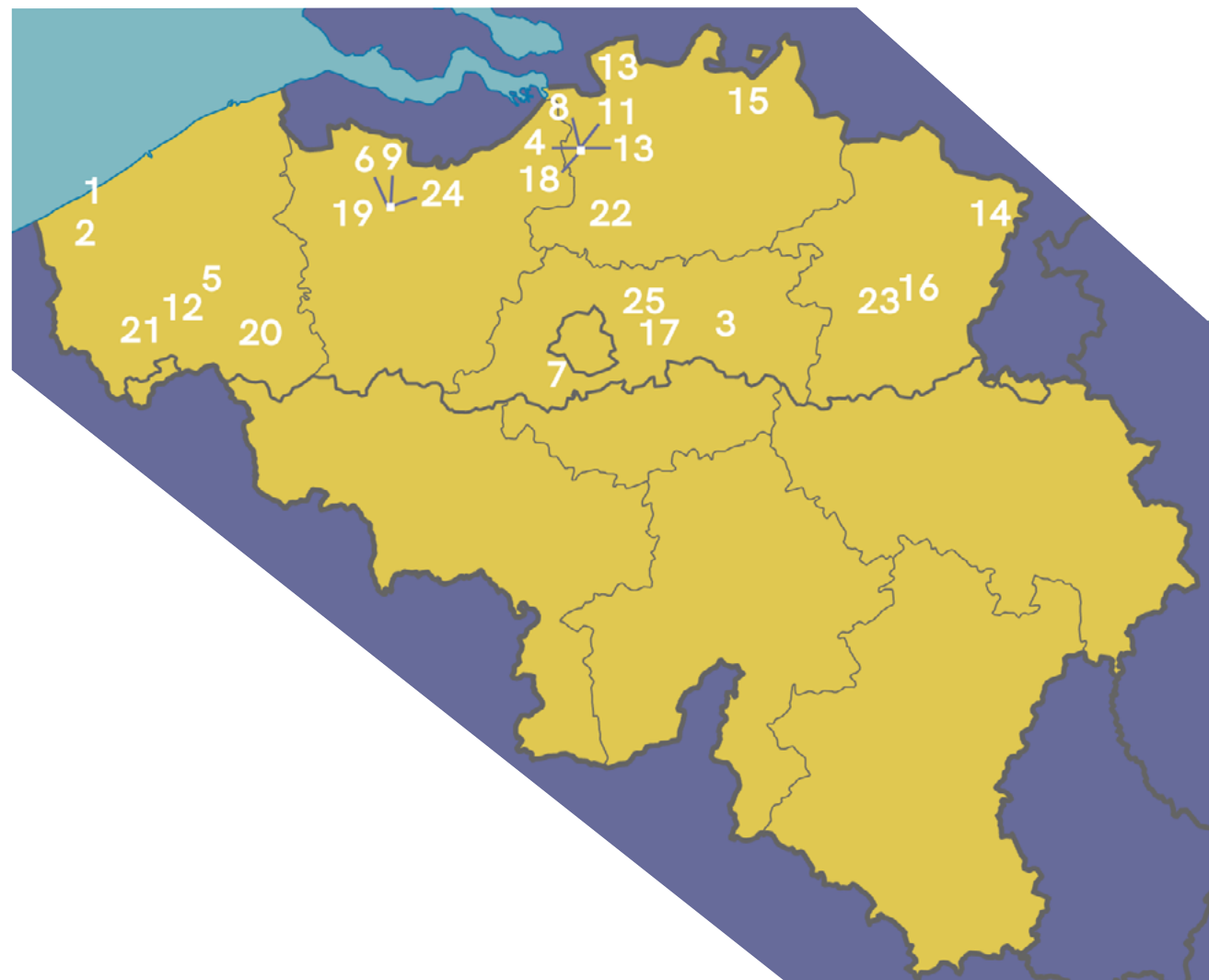
Table of contents

About the project

Programme

Panellists

Special thanks



Museums in the Learning Network

1. Abdijmuseum Ten Duinen

2. Bakkerijmuseum

3. De Mindere Franciscusmuseum

4. DIVA. Antwerp Home of Diamonds

5. Eperon D'Or

6. ETWIE

7. FelixArt Museum

8. FOMU Fotomuseum Antwerpen

9. Industriemuseum Gent
10. Karrenmuseum Essen

11. MAS Museum aan de stroom

12. Memorial Museum Passchendaele 1917

13. Modemuseum Antwerpen

14. Musea Maaseik

15. Musea Turnhout

16. Openluchtmuseum Bokrijk

17. PARCUM
18. Red Line Star museum

19. Stichting mevrouw Jules-Dhondt Dhaenens

20. Texture Museum over Leie en vlass

21. Ypermuseum

22. Hof van Busleyden*

23. Jenevermuseum*

24. Huis van Alijn*

25. Museum M*

About the project

'Plans for the future: ICH included in museums' is a Flemish pilot project on integrating living heritage in museum's collection planning and management, initiated by Workshop Intangible Heritage ^(BE), in collaboration with several partners.

Starting in October 2019 with a kick off conference in [Tilburg ^{\(NL\)}](#), the project is now coming to a close with this international, online conference. 'ICH included' is the next step in a line of research about the safeguarding of intangible cultural heritage (ICH) and the involvement of museums in this process. It follows up on the questions emerging from the recently completed European [ICH and Museums Project](#): (how) can a space be created where intangible heritage communities and museums can work together to safeguard the practices and knowledge surrounding living heritage?

The project – Plans for the Future: ICH included in museums – focuses on questions and opportunities arising from collection (policy) planning in museums in relation to the safeguarding of intangible heritage, stemming from an integrated approach towards cultural heritage. The integration of intangible heritage in museum policy and practice often appears to entail a challenging trajectory, because of the different logics behind heritage care for tangible

and intangible cultural heritage. Together with a broad variety of partners, the project has tried to gain insight into the relationship(s) between intangible heritage and collection planning, identifying bottlenecks and opportunities, generating practical answers for further development.

After an initial research stage (October 2019 – October 2020), Workshop Intangible Heritage and partners assembled a Learning Network of 25 Flemish national and regional museums. This network carried out practical experiments within four 'Living Lab Museums': Hof van Busleyden, Jenevermuseum, Huis van Alijn and Museum M. Each one of these Living Lab Museums put forward their own challenges, questions and ideas to be explored, to inspire others and to reflect on their own museum policy and management on safeguarding living heritage and on working together with the concerned communities, groups and individuals.

Although the project itself has come to an end, the common journey has just started. The experiments, dialogues and relationships that have been developed throughout the past two years, have enabled a new exploration: towards a shared understanding and development of heritage practices in Flanders (and beyond!). Today we look back on our experiences and share our ideas for the future.

Workshop Intangible Heritage

[Workshop Intangible Heritage ^{\(BE\)}](#) is committed to anyone involved with intangible cultural heritage (ICH). Together with everyone who supports it, from all social domains, and from the full diversity of society, the organization carries out a broad variety of safeguarding endeavours in Flanders. We help safeguard the vibrant traditions and practices of tomorrow, by collaborating and cross-fertilizing across all types of borders and domains. We take on a pacemaker's role in Flanders and in international networks in the developments surrounding the safeguarding of intangible heritage.

13u00	TEASER video
13u10	WELCOME
13u20	INTRODUCTION & PROGRESS PROJECT
13u40	PRESENTATION LIVING LAB MUSEUMS
	VIDEO Jenevermuseum
	QUESTIONS for Davy
	VIDEO Hof van Busleyden
	QUESTIONS for Sigrid
	VIDEO Huis van Alijn
	QUESTIONS for Els
	VIDEO Museum M
	QUESTIONS for Marjan
14u30	GENERAL QUESTIONS & DISCUSSION
14u45	COFFEE BREAK
15u00	Transforming living heritage into data: “Test case digital registration & ICH”
	QUESTIONS
15u20	KEYNOTE Reshaping the collectible
	QUESTIONS for Pip
16u00	COFFEE BREAK
16u10	REVEAL DYNAMIC KNOWLEDGE HUB
16u25	REFLECTION BY FARO
16u35	REFLECTION BY ICOM
16u45	CLOSING WORD
16u55	GOODBYE
17u00	END

Jorijn Neyrinck (WIH)
Shana Van Hauwermeiren (WIH)

Davy Jacobs

Sigrid Bosmans

Els Veraverbeke

Marjan Debaene
Jana Kerremans (WIH)

Bert Lemmens (Meemoo)

Pip Laurenson (TATE)

Shana Van Hauwermeiren (WIH)
Elien Doesselare
Sergio Serveillon
Sophie Elpers (KIEN)
Shana Van Hauwermeiren (WIH)

Moderator: Jana Kerremans (WIH)



Jorijn Neyrinck
Director - Workshop Intangible Heritage ^(BE)

Jorijn Neyrinck (°1978) is comparative anthropologist. She coordinates the organization Workshop Intangible Heritage since 2003 (called tapis plein until 2017), taking a lead in the field from the onset regarding development and network cooperation around safeguarding ICH. Jorijn is an active cultural broker, bridging between intangible cultural heritage communities, governments, civil society, institutions... Jorijn is Vice-President of the Flemish Commission for UNESCO in Belgium, a trained facilitator for the UNESCO 2003 Convention, and a member in the Evaluation Body until 2023.

Shana Van Hauwermeiren
Project coordinator 'Plans for the future:
ICH included in museums' –
Workshop Intangible Heritage ^(BE)

Shana Van Hauwermeiren majored in History at Ghent University ^(BE) and started working in the Flemish cultural heritage field in 2018. She is currently coordinating the project 'Plans for the future: ICH included in museums' (October 2019 – October 2021). Before she joined Workshop Intangible Heritage, she worked together with local heritage communities, guiding them with the assessment of the significance of their local cultural heritage objects and collections.



Jana Kerremans
Staff Member - Workshop Intangible Heritage ^(BE)

Jana joined the Workshop Intangible Heritage in March 2020. She coordinates one of the organization's four major goals: safeguarding intangible heritage, and is responsible for projects, support and research of participation in relation ICH communities. Jana is also a freelance presenter, panel host & editor, with interests in heritage, literature, museum activism, fundraising, social history, sustainable tourism, urbanism, feminism, intersectionality & gender equality.



Davy Jacobs
Director – Jenever museum ^(Hasselt, BE)

Davy has been the director of the Jenever Museum for more than 15 years. Together with local heritage communities and distillers, he has initiated several projects to put the distilling of jenever according to 19th century principles on the map as intangible cultural heritage. Davy considers the Jenever-museum as part of the heritage community involved with the Belgian jenever heritage and wants to continue to support the safeguarding of these traditions and practices.

Sigrid Bosmans
Coordinator policy development Department
Leisure – City of Mechelen ^(BE)

Sigrid has a Master's degree in Art History and is currently coordinator of the policy development of the Leisure Department of the City of Mechelen. Throughout her career she has been an active member of various committees, expert groups and commissions in the heritage and culture world. At the moment Sigrid is appointed as a member of the Strategic Advisory Board of the Sector Council for Culture and Heritage in Flanders.



Els Veraverbeke
Conservator / Curator / Head of Collections & Research
– Huis van Alijn ^(BE)

Els Veraverbeke studied history at Ghent University and has worked at the Huis van Alijn for over 20 years. She is a curator and head of Collections & Research. Els advocates securing intangible cultural heritage in museum collections by documenting traditions, rituals and rituals in daily life. In the Huis van Alijn, she sees this as an important leitmotiv in the collection policy, which focuses on traditions, rituals and traditions of daily life. Every tradition, large or small, public or private, is worth remembering and investigating within a historical and cultural perspective. Throughout her career, she has been and is active as a member of various committees, expert groups and commissions in the heritage and cultural world.

Marjan Debaene
Head of Collections Department
– Museum M ^(Leuven, BE)

Marjan Debaene started out in 2006 as a scientific researcher for M, and coordinated the selection, preparations and installation of the new permanent collection of M in 2009. Furthermore, Marjan became Head of Collections of M in 2012 and is the coordinator of the Ards-network for medieval sculpture since 2014. Since 2020 she is also a member of the CODART programming committee.



Sofie Vermeiren
Head of Education – Museum ^(Leuven, BE)

Sofie Vermeiren studied Art Science at the KU Leuven and also did her teacher training there. She has been working in the Flemish museum sector since 2000, where she set up various projects and training courses on public mediation and participation in a museum context. Today, she is head of the education department at M Leuven. She is also a national correspondent for CECA/ ICOM Belgium and works for the Board of Directors of ICOM Flanders.

Bert Lemmens
Team member Knowledge & Expertise
– Meemoo ^(BE)

Bert Lemmens has been part of Meemoo (formerly Packed) since 2011 and worked on various projects such as CEST, a knowledge platform for digitising heritage collections, Scoremodel, a self-assessment tool for digital preservation of heritage collections, PREFORMA, the development of validation software for archiving formats, and SCALA, development of an archive container for digital archives. He is also involved in Linked Open Data projects in the heritage sector and the development of the OSLO standard for heritage.



Pip Laurenson

Head of Collection Care Research – Tate^(UK) /
Professor of Art, Collection and Care – University of Maastricht^(NL)

Pip Laurenson is the Head of Collection Care Research at Tate^(UK) and holds a special chair as Professor of Art, Collection and Care at the University of Maastricht (Netherlands). She has over twenty years of experience in the conservation of contemporary art, establishing and leading Tate's pioneering Time-based Media Conservation section from 1996 until 2010. In 2010 Pip took up her current role, as Head of Collection Care Research to develop, lead and support research related to the conservation and management of Tate's collections. In championing the role of research practitioners as central to the definition of the museum as a research organisation, Pip is committed to interdisciplinary research that serves and responds to art of our time and the challenges facing the 21st century art museum. Pip currently leads the Andrew W. Mellon Foundation initiative Reshaping the Collectible: When Artworks Live in the Museum. She received her doctorate from University College London, is an accredited member of the Institute for Conservation and is a member of the Steering Committee of the International Network for the Conservation of Contemporary Art (INCCA).



Sergio Servellón

Director – ICOM Belgium Flanders (BE) & FeliXart Museum^(BE)

Sergio Servellón is member of the NEMO Executive Board since 2018, Vice-Chair of the National Committee of ICOM Belgium as president of ICOM Belgium Flanders. Since 2005, he has been director of FeliXart Museum, which he has reoriented from a monographic to a thematic museum with a focus on the Belgian historical avant-garde movement in the inter-war period. He is web-editor for the site theme 'Abstract Modernism' for the Flemish Art Collection. Furthermore, Sergio is president of the Pasfoundation (a Maecenas project) part of the King Baudouin Foundation in collaboration with companies, artists and museums.



Elien Doesselaere

Advisor intangible heritage / communication manager
– FARO^(BE)

Elien Doesselaere studied history (University of Ghent) and archivistics (VUB). From 2012 to 2017 she worked for the Province of West Flanders, first in the heritage library, later as museum consultant. After a short stop (2018 – 2019) at the Department of Culture, Youth and Media of the Flemish government, where she was among other things responsible for communication for the network Erfgoedinzicht and the intangible cultural heritage policy, she now works at FARO. At FARO, Elien is the contact person for immaterial heritage. Elien stimulates cultural heritage organisations to develop a participatory approach to intangible cultural heritage. As a communication manager, she helps to ensure a wonderfully clear internal and external communication.



Olga Van Oost

General director / advisor museology – FARO^(BE)

Olga Van Oost studied Art Sciences and archaeology and communication sciences at the Free University of Brussels, where she still works part-time at the department of communication sciences. Olga was sector coordinator for museums and advisor for museology at FARO until December 2019. In that position, she advised and supported museums in their policy and practice. Since the 1st of January 2020, Olga became general director of FARO. She broadened her field of work to archives, heritage libraries, heritage cells, organisations that focus on intangible cultural heritage, heritage service providers, and museums. The purpose of FARO, the Flemish institution for cultural heritage is to support heritage professionals and to help them flourish.



Sophie Elpers

Scientific collaborator – KIEN^(NL)

Sophie Elpers studied ethnology and art history at the universities of Bonn^(GER), Leiden^(NL) and Amsterdam and obtained her PhD at the University of Amsterdam^(NL) in 2014. She is a researcher in ethnology at the Meertens Institute and since January 2021 affiliated researcher at NL-Lab. Sophie is also affiliated with the Netherlands Centre for Intangible Heritage, where she researches the relationship between intangible and tangible heritage. Between 2017 and 2020 she was part of the steering committee of the 'Intangible Cultural Heritage & Museums Project' (IMP). Sophie teaches 'critical heritage studies' at the University of Bonn and since 2015 she holds the role of executive vice president of SIEF, International Society for Ethnology and Folklore.



Special thanks to



Pip Laurenson

Partners



Olga Van Oost
& Elien Doesselaere



Sophie Elpers



Sergio Servellón



Bert Lemmens

Living Lab Museums



Museum Hof van Busleyden

Sigrid Bosmans



Davy Jacobs



Marjan Debaene
& Sofie Vermeiren



Els Veraverbeke



WORKSHOP
INTANGIBLE
HERITAGE BE

Contact information | Workshop Intangible Heritage

Shana Van Hauwermeiren – project coordinator
shana@werkplaatsimmaterieelerfgoed.be

Jorijn Neyrinck – director
jorijn@werkplaatsimmaterieelerfgoed.be

With the
support of
the Flemish
Government



Flanders
State of the art