

# Capturing intangible cultural heritage into data: towards a standard for recording living heritage in collection management systems

## CIDOC ICH Working Group

May 23rd, 2023 | 14.00-16.00h CET



# PROGRAMME

14.00h-14.25h	<b>WELCOME</b>  Sergio Servellón - Chair ICOM Belgium Flanders and co-chair CIDOC ICH Working Group Trilce Navarrete - Chair CIDOC
14.25h-15.00h	<b>STATE OF AFFAIRS in Flanders (BE) on converting ICH into data</b>  Kia Tsakiridis & Bert Lemmens - Workshop Intangible Heritage (BE)
15.00h-15.30h	<b>IN PRACTICE: experimental examples from heritage organisations in Flanders (BE)</b>  Eva Dierickx - Huis van Alijn  Annelies Valgaeren - Heritage collections city of Antwerp
15.30h-16.00h	<b>ROADMAP: towards an international standard for recording living heritage in museums' collection management systems</b>

# WELCOME

**Sergio Servellón**

Chair ICOM Belgium Flanders  
& co-chair CIDOC ICH Working Group

**ICOM** international  
council  
of museums  
**Belgium Flanders**

---

**Trilce Navarrete**

Chair CIDOC

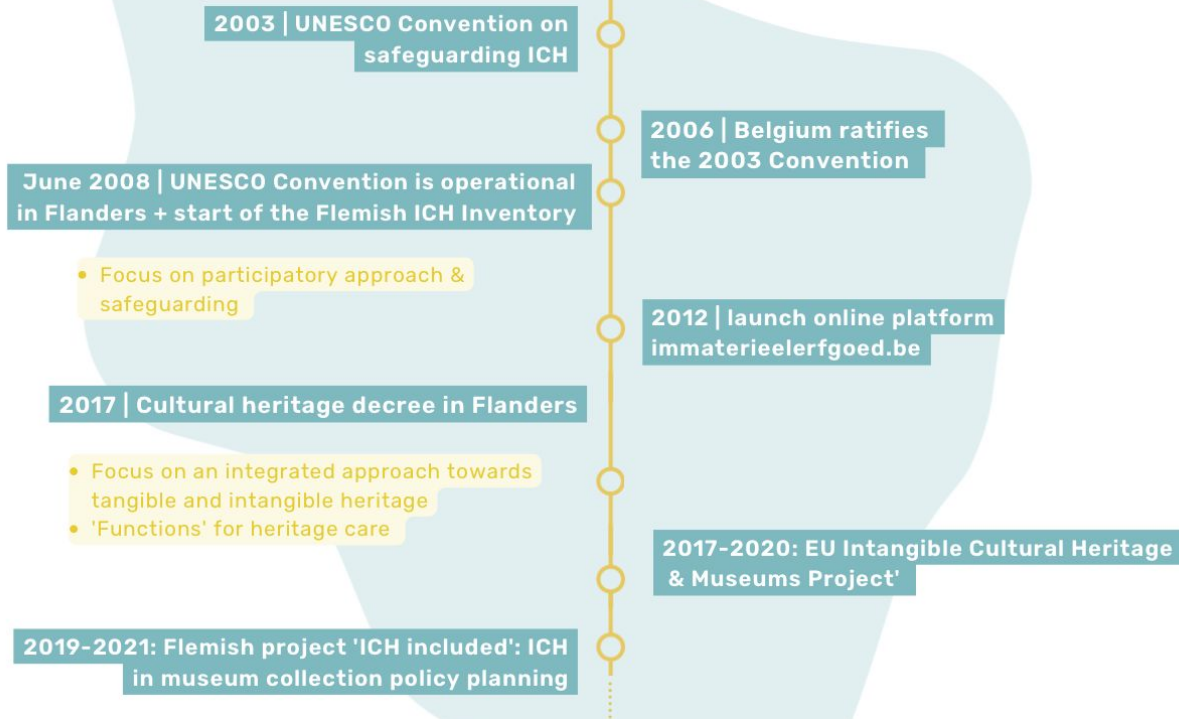
**M**  
**CIDOC**

# **STATE OF AFFAIRS: converting ICH into data.**

## **A trajectory from Flanders (BE)**

Kia Tsakiridis





# INTANGIBLE CULTURAL HERITAGE?

## INTANGIBLE CULTURAL HERITAGE IS A LIVING AND DYNAMIC PRACTICE

- ▶ 'practices, representations, expressions, knowledge, skills'
- ▶ 'instruments, objects, artefacts and cultural spaces associated' with ICH, are part of its definition.

## Oral traditions and expressions, including language as a vehicle of the intangible cultural heritage



Anansi storytelling (NL) – © Nederlands Openluchtmuseum

ICH-DOMAIN

'The "intangible cultural heritage" means the practices, representations, expressions, knowledge, skills – as well as the instruments, objects, artefacts and cultural spaces associated therewith – that communities, groups and, in some cases, individuals recognize as part of their cultural heritage. This intangible cultural heritage, transmitted from generation to generation, is constantly recreated by communities and groups in response to their environment, their interaction with nature and their history, and provides them with a sense of identity and continuity, thus promoting respect for cultural diversity and human creativity. [...]'

*Intangible cultural heritage, as described in the UNESCO 2003 Convention for the Safeguarding of the Intangible Cultural Heritage*

## Knowledge and practices concerning nature and the universe



Gathering of wild herbs, fruits and mushrooms in the Massif des Bouges – © Flore Giraud

ICH-DOMAIN

## INTANGIBLE CULTURAL HERITAGE IS TRANSMITTED

- ▶ 'from generation to generation'
- ▶ 'identity and continuity'

## Traditional craftsmanship



Weaving in Aubusson (FR) – © RE, Service communication ICH-domain Creuse Grand Sud

ICH-DOMAIN

## PEOPLE ARE CENTRAL TO INTANGIBLE CULTURAL HERITAGE

- ▶ 'communities, groups and, in some cases, individuals'

## Performing arts



Tea Time Company (circus) (BE) – © Fotokultur

ICH-DOMAIN

## Social practices, rituals and festive events



Winegrowers' Festival in Vevey (CH) – © Confrérie des Vignerons

ICH-DOMAIN

## INTANGIBLE CULTURAL HERITAGE IS ALWAYS CHANGING

- ▶ 'constantly recreated'
- ▶ 'in response to their environment, their interaction with nature and their history'



## Basic Texts

of the 2003 Convention for the Safeguarding of the Intangible Cultural Heritage

2022 Edition

## Immaterieel erfgoed leeft!

Vier jij Nieuwjaar? Of het begin van de lente met Nourouz? Zit een muziekgenre je in het bloed, een ambacht je in de vingers? Met jou vele anderen! Al deze tradities en technieken noemen we 'immaterieel erfgoed'. Van vroeger, maar vandaag net iets anders. Volop gekoesterd, divers en overal in Vlaanderen. Benieuwd wat er leeft?



IMMATERIEEL ERFGOED



TOEKOMST GEVEN



KENNIS



ACTUEEL

vertellen en taalgebruik muziek en podiumkunsten feesten, rituelen en sociale gebruiken sport en spel natuur en landbouw eten en drinken ambacht, vakmanschap en techniek ander



**Heilig Bloedprocessie Hoogstraten**  
FEESTEN, RITUELEN EN SOCIALE GEBRUIKEN



**Vlaamse volksdansen**  
MUZIEK EN PODIUMKUNSTEN, FEESTEN, RITUELEN EN SOCIALE GEBRUIKEN



**Zevenjaarlijkse Virga Jessefeesten te Hasselt**  
FEESTEN, RITUELEN EN SOCIALE GEBRUIKEN



**Volkssport krulbol**  
SPORT EN SPEL



**Genovevaprocessie Zeperen**  
FEESTEN, RITUELEN EN SOCIALE GEBRUIKEN



**Sint-Verhaegenherdenking en -stoet**  
FEESTEN, RITUELEN EN SOCIALE GEBRUIKEN



**Kalligrafie**  
VERTELLEN EN TAALGEBRUIK, AMBACHT, VAKMANSCHAP EN TECHNIEK



**Syrische koffie, een welkomstkoffie.**

FEESTEN, RITUELEN EN SOCIALE GEBRUIKEN, ETEN EN DRINKEN, AMBACHT, VAKMANSCHAP EN TECHNIEK



**De kennis en vaardigheden voor het bouwen van balansbogen van Miel Van Beeck**

AMBACHT, VAKMANSCHAP EN TECHNIEK



**Processie van Plaisance**

FEESTEN, RITUELEN EN SOCIALE GEBRUIKEN



**Platbroden bakken in Anderlecht**

FEESTEN, RITUELEN EN SOCIALE GEBRUIKEN, ETEN EN DRINKEN, AMBACHT, VAKMANSCHAP EN TECHNIEK



**Survakari**

VERTELLEN EN TAALGEBRUIK, FEESTEN, RITUELEN EN SOCIALE GEBRUIKEN, NATUUR EN LANDBOUW, AMBACHT, VAKMANSCHAP EN TECHNIEK



**Moise lichtstoeten**

FEESTEN, RITUELEN EN SOCIALE GEBRUIKEN



**Paard van Appels - Dendermonde**

FEESTEN, RITUELEN EN SOCIALE GEBRUIKEN



**Wervikse tabaksreuzen**

FEESTEN, RITUELEN EN SOCIALE GEBRUIKEN

**2017-2020 - Five international conferences & expert meetings...**



[ICHandmuseums.eu](http://ICHandmuseums.eu)

... with keynotes, position papers, inspiring examples, workshops, debates, panels with ICH-practitioners, co-creations, networking ...



# REFERENCE FRAMEWORK, KEY TEXTS AND NETWORKS IN THE 21<sup>ST</sup> CENTURY



## INTERNATIONAL COUNCIL OF MUSEUMS (ICOM)

[Learn more →](#)

Museum definition

2004 Seoul Resolution  
Resolution on museums and  
intangible cultural heritage

Code of Ethics  
for Museums

Object ID



## EUROPE

The Treaty on European Union states that the Union shall 'ensure that Europe's cultural heritage is safeguarded and enhanced'.

[Learn more →](#)

Focus on heritage & participatory governance, integrated approach, and cultural diversity in a social Europe



NEMO

Network  
of European  
Museum  
Organisations

2005  
Convention on the  
Value of Cultural  
Heritage for Society  
(Faro Convention)  
Council of Europe

2014  
The Council of the European Union cites 'cultural heritage as a strategic resource for a sustainable Europe'  
*Tangible and intangible (and digital) cultural heritage are side by side in a vision on heritage as a strategic resource for a sustainable Europe*

2019  
Resolution – Safeguarding and enhancing intangible cultural heritage in Europe  
Council of Europe Parliamentary Assembly

## WORLDWIDE

[Learn more →](#)

MUSEUMS

INTANGIBLE  
CULTURAL HERITAGE

SUSTAINABLE

DEVELOPMENT GOALS

UN Agenda 2030 > 17 goals to transform our world



## UNESCO

[Learn more →](#)

2003 Convention for the Safeguarding of the Intangible Cultural Heritage

Basic Texts

Basics of  
the 2003  
Convention

Operational  
Directives

Ethical  
Principles

Overall Results  
Framework



ICH  
NGO Forum

Global network  
of facilitators &  
Global capacity-  
building  
programme

1972  
Convention Concerning  
the Protection of the World  
Cultural and Natural Heritage  
(World Heritage Convention)

2015  
Recommendation  
concerning the Protection  
and Promotion of  
Museums and Collections,  
their Diversity, and their  
Role in Society





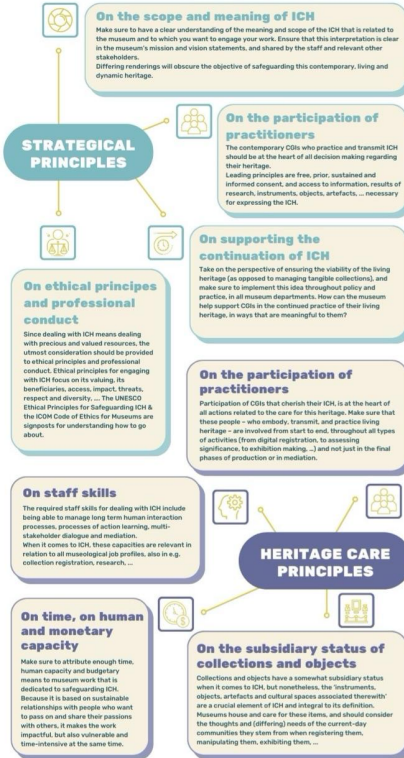
# IMP KIT TOOL



# MUSEUMS SAFEGUARDING INTANGIBLE CULTURAL HERITAGE

Museums can reveal themselves as privileged spaces for contributing to the future of intangible cultural heritage (ICH)\*. More so, they are among the first-choice institutions supporting the communities, groups and individuals (CGIs) that practice this living heritage in their safeguarding endeavors.

## How can museums embrace the participatory and future-oriented spirit that underlies the paradigm of intangible cultural heritage?



**"INTANGIBLE CULTURAL HERITAGE (ICH)"**  
The "intangible cultural heritage" means the practices, representations, expressions, knowledge, skills - as well as the instruments, objects, artefacts and cultural spaces associated therewith - that communities, groups and, in some cases, individuals recognize as part of their cultural heritage. This intangible cultural heritage, transmitted from generation to generation, is constantly recreated by communities and groups in response to their environment, their interaction with nature and their history, and provides them with a sense of identity and continuity, thus promoting respect for cultural diversity and human creativity. [...]

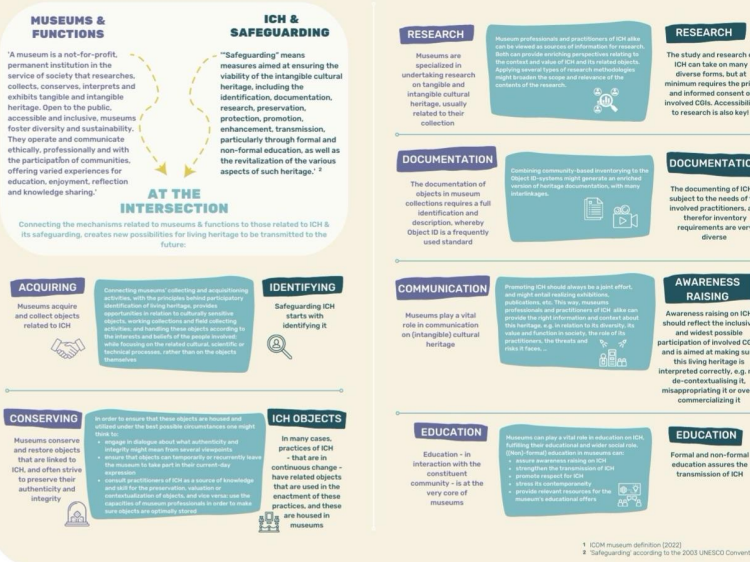
Intangible cultural heritage, as defined in the UNESCO 2003 Convention for the Safeguarding of the Intangible Cultural Heritage

- ICH DOMAINS**
- oral traditions & expressions
  - performing arts
  - social practices, rituals & festive events
  - knowledge & practices concerning nature & the universe
  - traditional craftsmanship

## Transforming and combining shared approaches

Museum professionals and practitioners of ICH have differing but equal and complementary (levels of) capacity in relation to safeguarding living heritage. It is worthwhile to pool their existing skill-sets and know-how for the common purpose of heritage care. This way, practitioners are supported in future-proofing the dynamic heritage that they cherish, and museums are provided with the opportunity to take a role in relation to community wellbeing, sustainable development, ...

Where do the functions that museums perform (based on the ICOM museum definition and the Code of Ethics for Museums) interact with safeguarding measures for ICH (based on the UNESCO 2003 Convention and its related Operational Directives) carried out by its practitioners? How does combining these commonly applied methods for heritage care, transform accustomed practices? And what potential does this unravel with an eye on safeguarding ICH in/with museums?



1 ICOM museum definition (2022)  
2 'Safeguarding' according to the 2003 UNESCO Convention

## MUSEUMS & FUNCTIONS

'A museum is a not-for-profit, permanent institution in the service of society that researches, collects, conserves, interprets and exhibits tangible and intangible heritage. Open to the public, accessible and inclusive, museums foster diversity and sustainability. They operate and communicate ethically, professionally and with the participation of communities, offering varied experiences for education, enjoyment, reflection and knowledge sharing.'

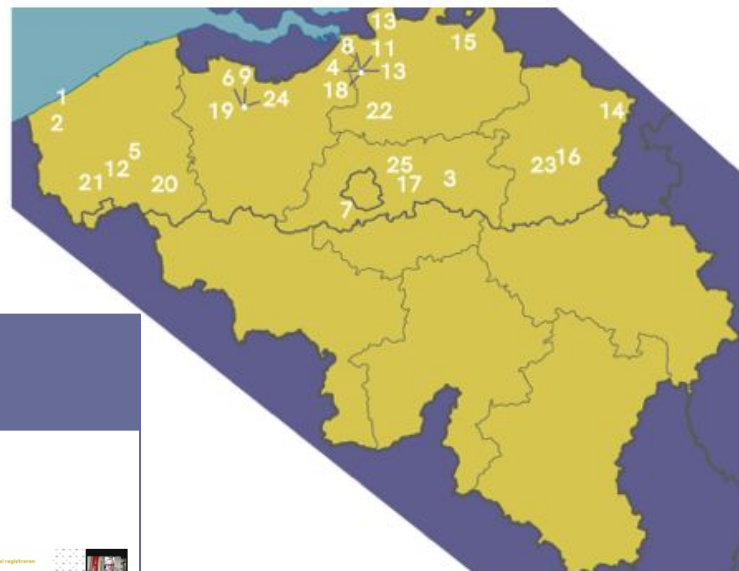
## ICH & SAFEGUARDING

“Safeguarding” means measures aimed at ensuring the viability of the intangible cultural heritage, including the identification, documentation, research, preservation, protection, promotion, enhancement, transmission, particularly through formal and non-formal education, as well as the revitalization of the various aspects of such heritage.’<sup>2</sup>

## AT THE INTERSECTION

Connecting the mechanisms related to museums & functions to those related to ICH & its safeguarding, creates new possibilities for living heritage to be transmitted to the future:

# A pilot project on integrating living heritage in museums' collection planning and management



## DE 4 PROEFTUINMUSEA

Hof van Busleyden, het Jenevermuseum, Huis van Alijn en M Leuven trokken hun stoute schoenen aan en openden hun deuren als experimentele proeftuinen. Elk proeftuinmuseum nam een andere uitdaging met beide handen vast en deelden hun vragen, ideeën en drempels met de collega's uit het Lerend Netwerk.

Neem via de knoppen hieronder een kijkje naar hun ervaringen en bevindingen!



PROEFTUIN JENEVERMUSEUM

PROEFTUIN HOF VAN BUSLEYDEN



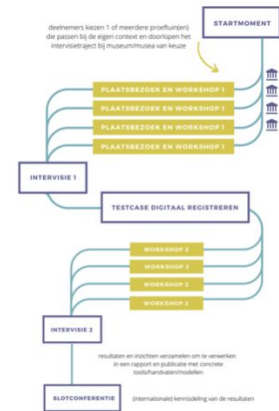
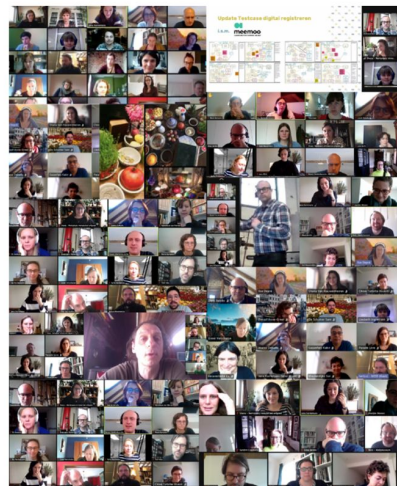
PROEFTUIN MUSEUM M LEUVEN

PROEFTUIN HUIS VAN ALIJN

<https://immaterieelerfgoed.be/nl/kennis/collectieplanning>

## Plans for the future: ICH included in museums

### A pilot project on integrating living heritage in museum's collection planning and management



# CAPTURING INTANGIBLE HERITAGE IN DATA?

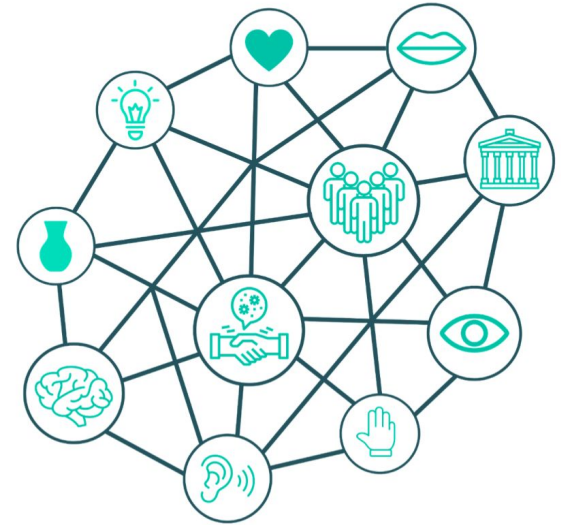
## Report & results:

- **Blueprint** of a new OSLO data model in three versions, designed based on the specifications and peculiarities of ICH
- **13 proofs of concept**
- **Registration manual** with **concrete input rules** for the different information units
- **Policy recommendations**

→ Currently in the process of being translated to English!

## CAPTURING INTANGIBLE HERITAGE IN DATA

An application profile for recording living practices



## INTANGIBLE HERITAGE: a need for integrating it into collection policies?

- **Collection (policy) plan** = document that contains the plans and approaches revolving around collections
- ! ICH ≠ collection

### How can a museum bridge this 'gap'? How can it 'justify' working on ICH?

- From its **mission, vision**, its **geographical proximity** to certain practices of ICH,...
- But: **qualitative survey** of nationally and regionally classified museums in **Flanders** revealed the **need** to interpret existing **issues** on a **technical level**, as an **aspect of collection management**.

How?

→ assigning a particular **status** to ICH practices (or broader: ICH) within collection data

→ starting point for intangible heritage work CAN be an **ICH practice** rather than a collection piece

**But, the tools, standards and agreements, to identify ICH are not currently not available...**



## CAPTURING INTANGIBLE HERITAGE IN DATA?

The **challenges surrounding the integration of information** on ICH practices in collection data, however are **diverse and multifaceted**:

- To describe an ICH practice in its **versatility** and with attention to its **dynamics**, it needs to be possible to record more than just the related collection items and documentation.
- The necessary **interlinkages** cannot be made in common collection management systems and in those of other organizations who take up a role in safeguarding ICH.
- Collection management systems **today do not yet have a tailored translation of concepts, aligned with those commonly** used within the **context of ICH**.
- ...





## CAPTURING INTANGIBLE HERITAGE IN DATA?

### Consequences?

- **Accumulation** of different types of **media and carriers**
- **Fragmentation** and **loss of** information that could be useful with a view towards safeguarding ICH
- ...

# CAPTURING INTANGIBLE HERITAGE IN DATA?

## POLICY RECOMMENDATIONS

→ a vision for **collaborating** with **communities, groups, individuals** that practice and transmit ICH

→ a vision on **connecting** collection **objects** with **ICH practices**

>>> UNESCO *Ethical Principles for Safeguarding Intangible Cultural Heritage*

>>> SPECTRUM-procedures

- **A collection manager's policy should therefore consider the following questions:**
  - Under what circumstances do you collect information about a practice of intangible heritage?
  - Under what conditions do you associate a collection piece with a practice of intangible heritage? In other words, when is an association between a collection item and an intangible heritage practice substantial enough for your institution to actually document that association?
  - Who is authorised to associate a collection item with a practice?
  - How long and in what form is information about the association with a practice kept?
  - Has the heritage community that 'carries' the Items and Themes in question been contacted and informed consent or further involvement achieved



## CAPTURING INTANGIBLE HERITAGE IN DATA?

### 5 POLICY RECOMMENDATIONS

**MINIMUM REQUIREMENT 1** REGISTER WITHIN A PARTICIPATORY FRAMEWORK

**MINIMUM REQUIREMENT 2** IDENTIFY ASSOCIATED PRACTICES OF ICH

**MINIMUM REQUIREMENT 3** DISTINGUISH BETWEEN COLLECTION ITEMS 'USED IN' PRACTICES  
OF ICH AND COLLECTION ITEMS THAT 'RECORD' THEM

**MINIMUM REQUIREMENT 4** SITUATE PRACTICES AND THEIR VARIOUS MANIFESTATIONS  
IN TIME AND SPACE

**MINIMUM REQUIREMENT 5** DOCUMENT VARIOUS REPRESENTATIONS OF AN ICH PRACTICE

# INTANGIBLE HERITAGE IN A DIGITAL ECOSYSTEM... SOME REFLECTIONS

## Several challenges remain:

- Collection management **systems** are not in tune with requirements regarding ICH
- ICH often is an **afterthought** when it comes to data management
- Findings still need to be thoroughly **assessed and tested** by a wide variety of museums
- **Participatory methodologies** are time consuming and often complex
- ...

## But also ... opportunities!

- Museums, archives, ... increasingly work on **safeguarding** ICH with the concerned communities, groups and individuals, at types of levels in their operations
- Communities, groups and individuals are also increasingly **realizing the value of their ICH**
- A series of **experimental pathways** are launched
- There is a particularly strong **interest: from Flanders, to Europe, to the global level ...!**

# **STATE OF AFFAIRS: converting ICH into data.**

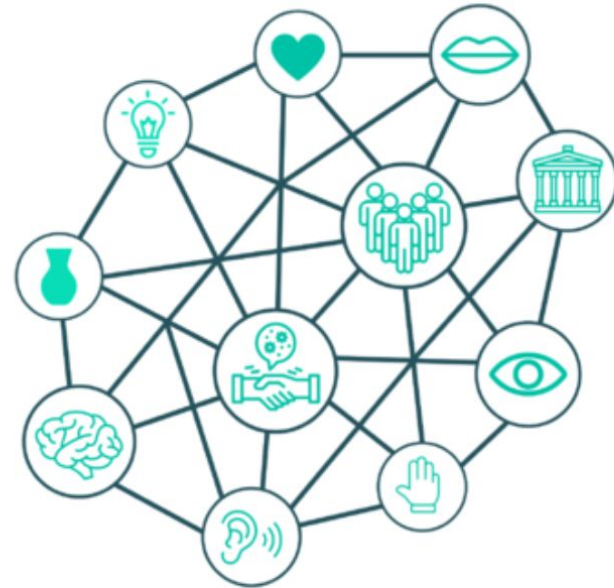
## **A trajectory from Flanders (BE)**

Bert Lemmens



# CAPTURING INTANGIBLE HERITAGE IN DATA AN APPLICATION PROFILE FOR RECORDING LIVING PRACTICES

- problem
- workshop
- application profile
- next steps



# CAPTURING INTANGIBLE HERITAGE IN DATA PROBLEM | MINIMUM RECORD

- institution name
- object number
- object name
- title/short description
- description
- maker
- creation date
- material
- condition
- dimensions
- acquisition method
- acquisition source
- acquisition date
- price
- current location

## VERGELIJKING VAN DE VELDEN

CIDOC minimale registratie telt 8 velden  
Basisregistratie Vlaanderen telt 19 velden  
Basisregistratie Nederland telt 20 velden

\* de gemarkeerde velden  
zijn voor het Nederlands  
Museumregister verplicht.

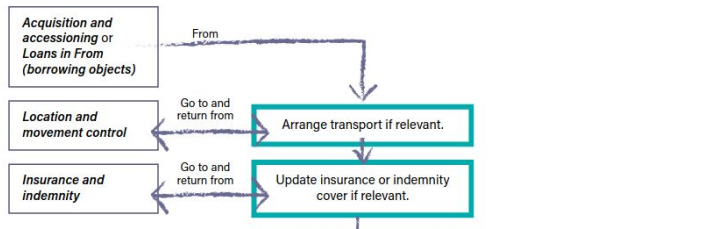
	CIDOC	Basisregistratie (Vlaanderen)	Basisregistratie (Nederland)
01	Institution name	Instellingsnaam	* Instellingsnaam
02			Instellingsnummer
03	Inventory number	Objectnummer	* Inventarisnummer
04	Object key word	Objectnaam	* Object trefwoord
05			Voorstelling trefwoord
06	Brief description and/or title	Titel	Titel
07		Beschrijving	Beschrijving
08		Vervaardiger	Vervaardig(st)er
09		Datering van	Datering
10		Datering tot	
11		Materiaal	Materiaal trefwoord
12		Toestand	Toestand trefwoord
13		Afmeling	Afmelingen (dimensie, waarde en eenheid)
14		Waarde	
15		Eenheid	
16			Vrij veld (openbaar)
17	Acquisition/accession, method	Verwervingsmethode	* Verwerving trefwoord
18	Acquired/accessioned, from (person / institution)	Verwerving van	* Verworven van
19	Acquisition/accession, date	Verwervingsdatum	Datum
20		Aankoopprijs	Bedrag
21		Val. [uta] aankoopprijs	
22			Vrij veld (gesloten)
23	Permanent location	Standplaats	* Standplaats
24			Opmerking

CIDOC staat voor: Committee on documentation of the International Council of Museums (ICOM), zie <http://www.cidoc.mediast.org>. Voor meer informatie over de Basisregistratie in Nederland, zie <http://www.den.nl> en de publicatie Jeanne Hogenboom, Basisregistratie voor collecties voorwerpen en beeldmateriaal, Stichting IMC, Rotterdam, 1988. ISBN 9071929019. Voor meer informatie over de Basisregistratie in Vlaanderen, zie <http://www.museuminzicht.be>.

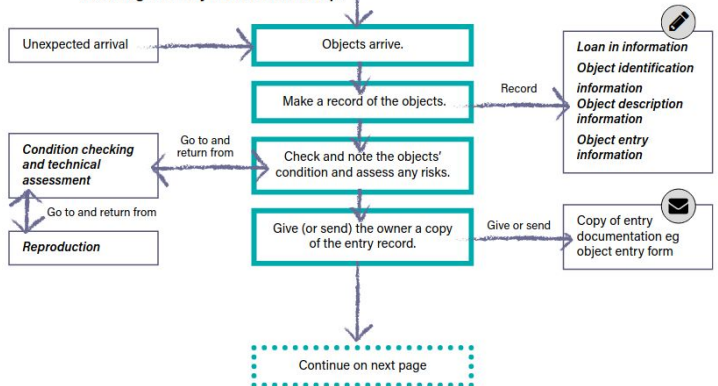
# CAPTURING INTANGIBLE HERITAGE IN DATA PROBLEM | PROCEDURES

## Object entry

### Preparing for object entry (if known in advance)



### Creating an entry record and receipt



Make a record of the objects as soon as they arrive.

See **Note 2** for information about what form your object entry records should take. Record the following information as needed. See **Note 3** for guidance on what to do with large groups of items.

#### Loan in information (if relevant)

- o If a Loan in reference number has been allocated, record this on the entry form (if not use the *Entry number*).

#### Object identification information

- o Brief description of the objects, including any accompanying information (eg production or usage).

#### Object entry information

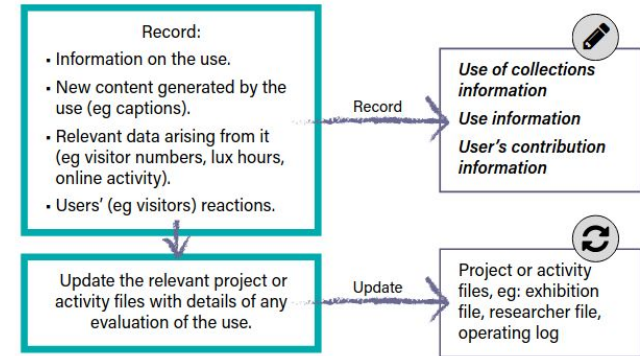
- o Entry number (unless a Loan in reference number has been allocated).
- o Name and address details of the current owner:
  - o Current owner (use a standard form of name).
  - o Address.
- o Name and address details of the depositor (if they are not the owner):
  - o Depositor (use a standard form of name).
  - o Address.
- o Entry date (use a standard format).
- o Entry reason (use a standard term source).
- o Entry method (use a standard term source).
- o Requirements of the owner (or depositor) including return details and confidentiality of information provided to you – Depositor's requirements.
- o Note of packing materials if necessary (they may be an integral part of the object) – Packing note.
- o An agreed Return date (use a standard format)



# CAPTURING INTANGIBLE HERITAGE IN DATA PROBLEM | CONTEXT?



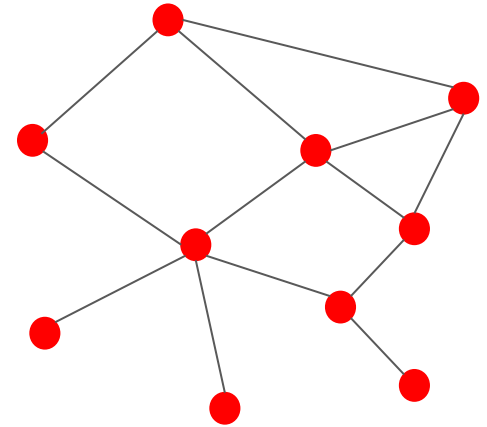
## Documenting the use of objects or reproductions



## CAPTURING INTANGIBLE HERITAGE IN DATA PROBLEM | LINKED DATA?

> Can we obtain a 'better' record of a living practice when describing it as a 'network' of associations ?

- linking objects | practices | documentation
- record different 'performances' of a living practice
- record the evolution of a living practice
- obtain more useable machine-readable information



# CAPTURING INTANGIBLE HERITAGE IN DATA WORKSHOPS

## Workshop 1: brainstorm

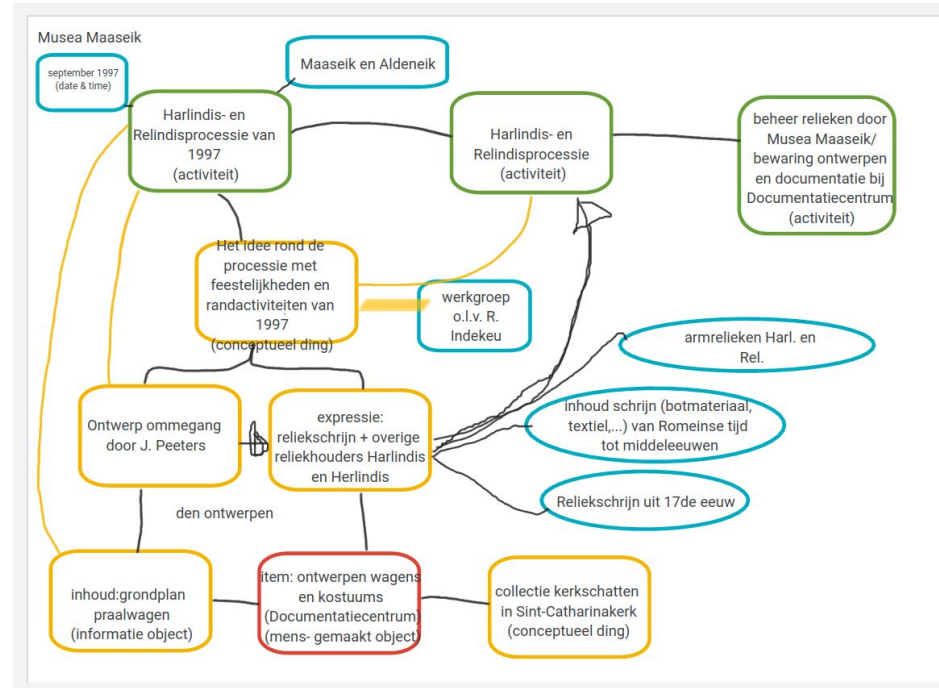
- terminology (entities?)
- notability (relevance?)
- systems (tools?)

## Workshop 2: vocabulary

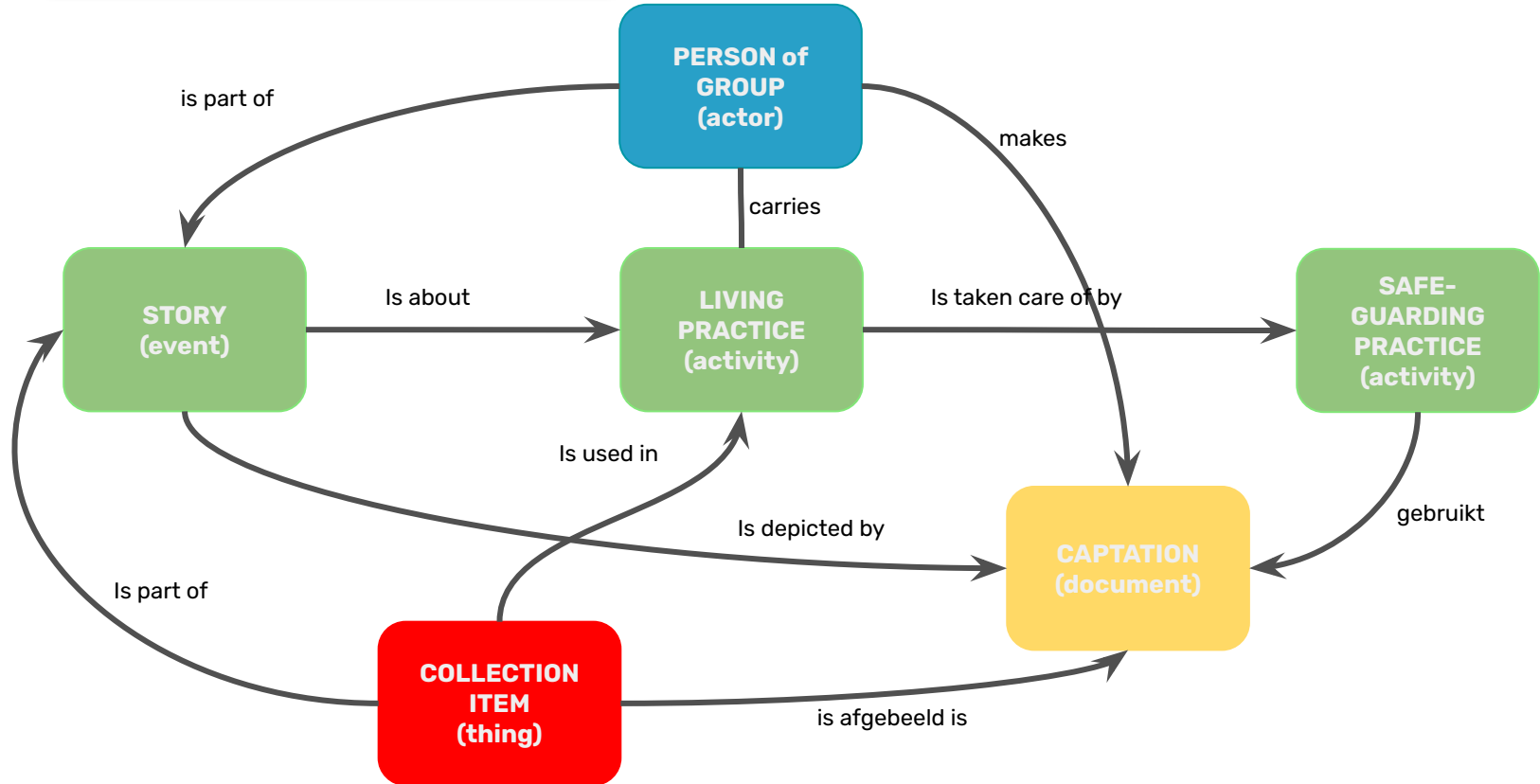
- introduction draft profile
- feedback collection registrars

## Workshop 3: modelling & validation

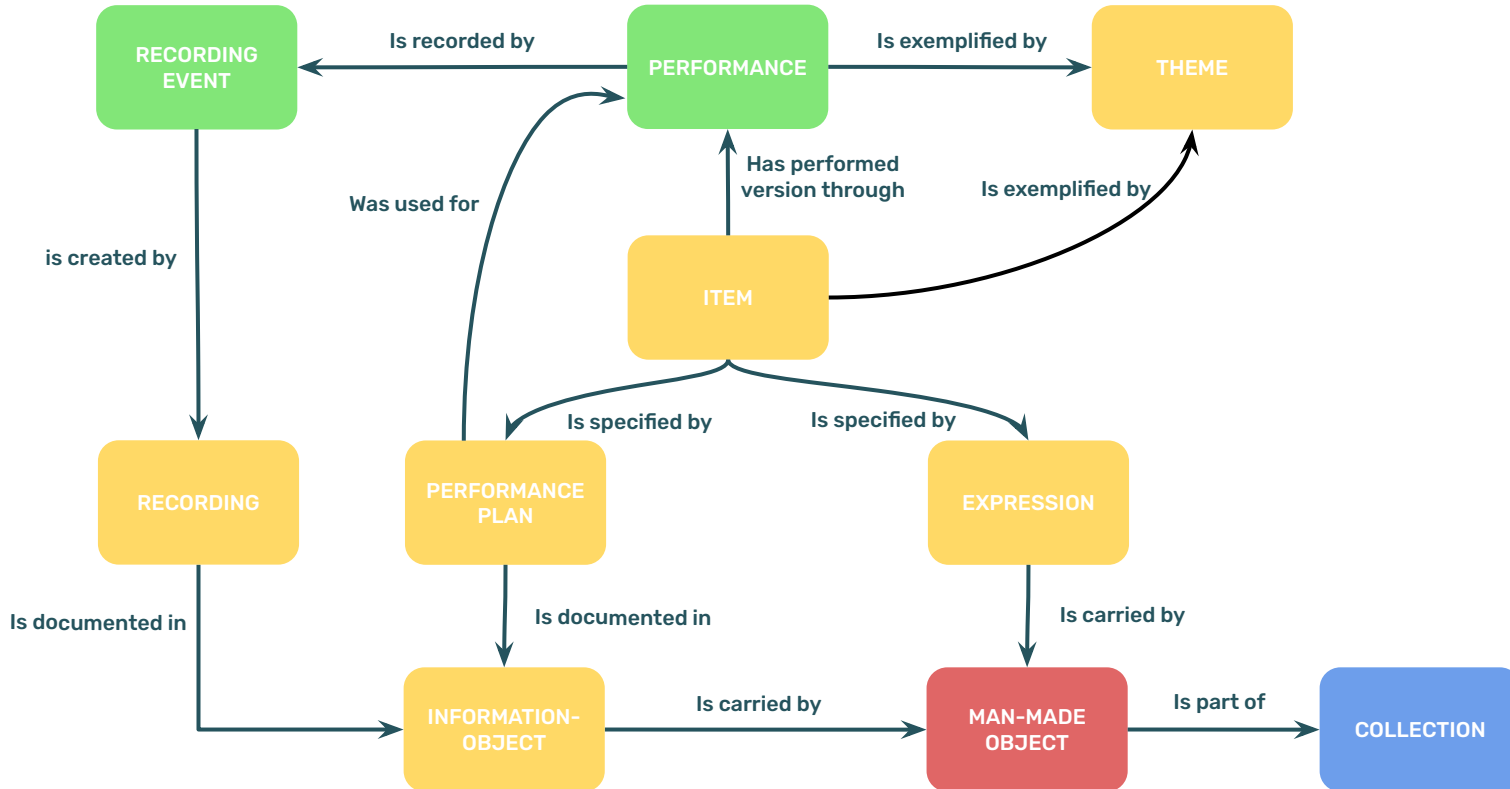
- 2th iteration profile - introductie standard LOD vocabulary
- test with real life data



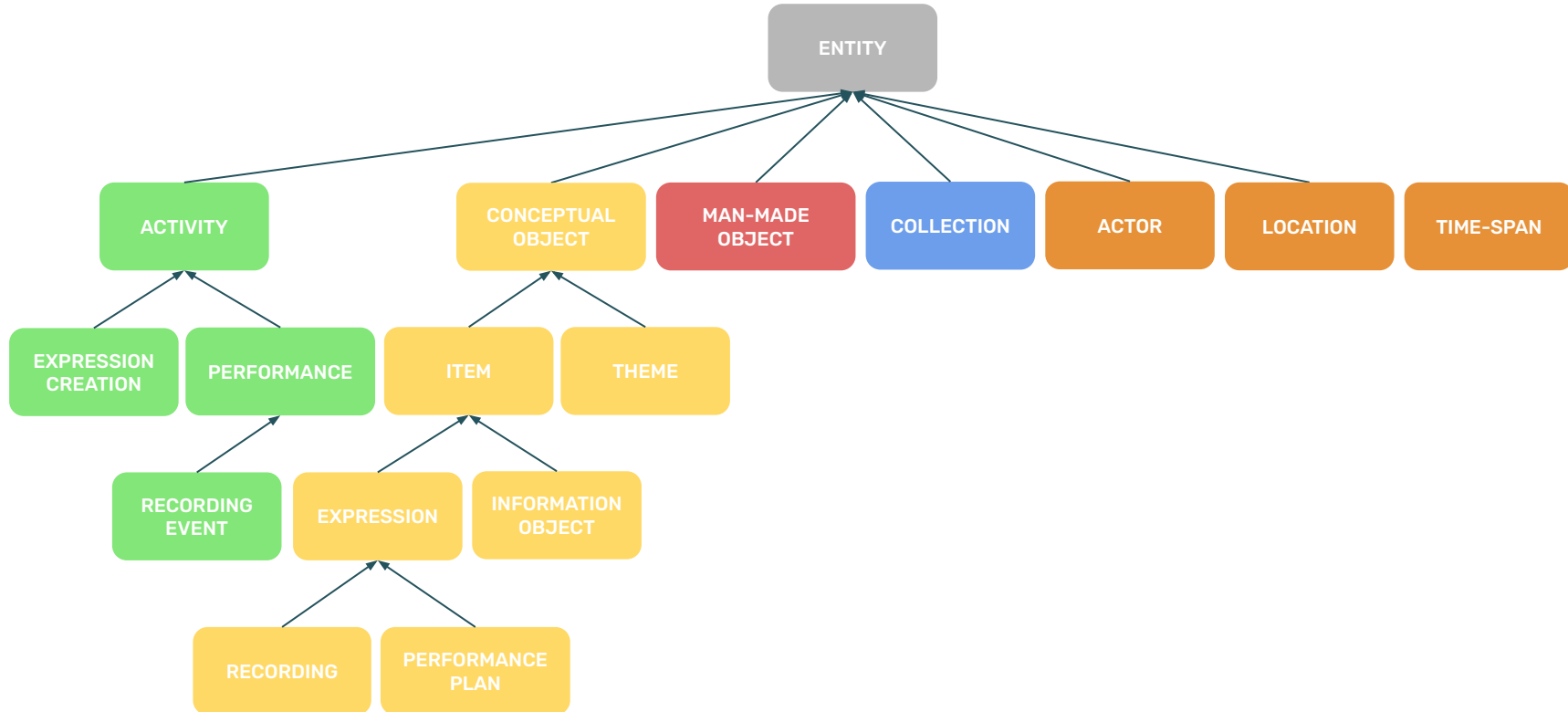
# CAPTURING INTANGIBLE HERITAGE IN DATA WORKSHOPS | MINDMAP



# CAPTURING INTANGIBLE HERITAGE IN DATA WORKSHOPS | CORE MODEL



# CAPTURING INTANGIBLE HERITAGE IN DATA VOCABULARY



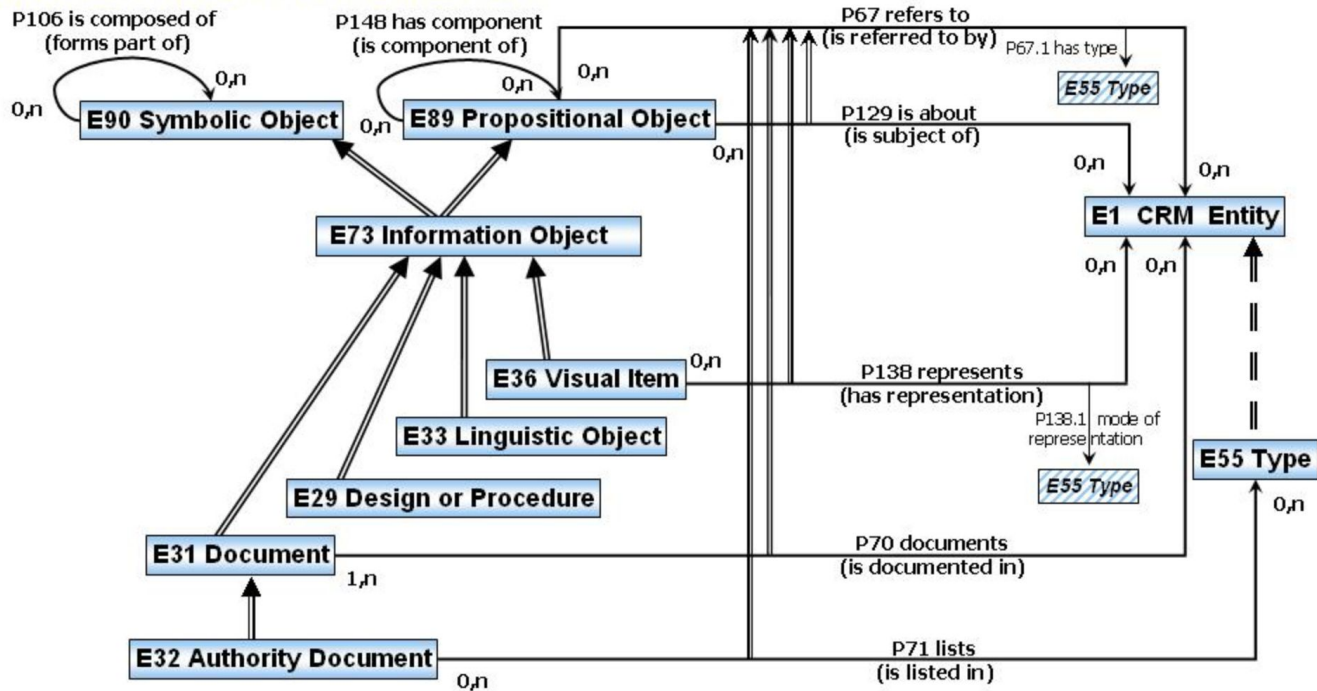
# CAPTURING INTANGIBLE HERITAGE IN DATA VOCABULARY | SPECIFICATION

## Item

<b>Class Name</b>	ice:Item
<b>Definition</b>	<b>A concept that makes a set of propositions about real or imaginary things and is documented and discussed as a whole..</b>
<b>Subclass of</b>	<a href="#">ice:ConceptueelObject</a>
<b>Super Class of</b>	<a href="#">ice:Expressie</a> <a href="#">ice:InformatieObject</a> <input type="checkbox"/>
<b>Equivalent Class</b>	<a href="#">crm:E89_Propositional_Object</a>
<b>Equivalent Class</b>	<a href="#">irm:F12</a> (Nomen)
<b>Equivalent Class</b>	<a href="#">oslo: Mensgemaakt Kenmerk</a>
<b>Equivalent Class</b>	<a href="#">wd:Q105673273</a> (attribute)
<b>Usage Guidelines</b>	<p>An Item is a (non-material) concept that represents a specific intangible heritage practice, as it lives in the minds of the practitioners involved, as well as the wider heritage community, at a particular time and place.</p> <p>Items are also used to identify the different versions of an intangible heritage practice - versions that arise through the evolution of an intangible heritage practice over time, or that arise from the personal experience of a practice.</p> <p>Items collect all the knowledge and expertise about and around a specific intangible heritage practice and play an important role in the identity formation of the heritage community involved.</p>
<b>Examples</b>	<ul style="list-style-type: none"> <li>- 'speculaas' biscuits, the way 'baker Dirk' makes them</li> <li>- Het idee van pater Frans om een corona-editie van de negen dinsdagen van Sint-Antonius te maken waarbij de activiteit niet in de paterskerk maar in de O.L.V.kerk plaatsvindt.</li> <li>- Het aankleden van Fonske door 'de mannen van het jaar <del>2020</del>'</li> </ul>
<b>Patterns</b>	<p>{Item}-[Has a Performed Version Through]-{Performance}</p> <p>{Theme}-[Is Exemplified By]-{Item}</p> <p>{Item}-[Is Specified By]-{Performance Plan}</p> <p>{Item}-[Is Specified By]-{Expression}</p>

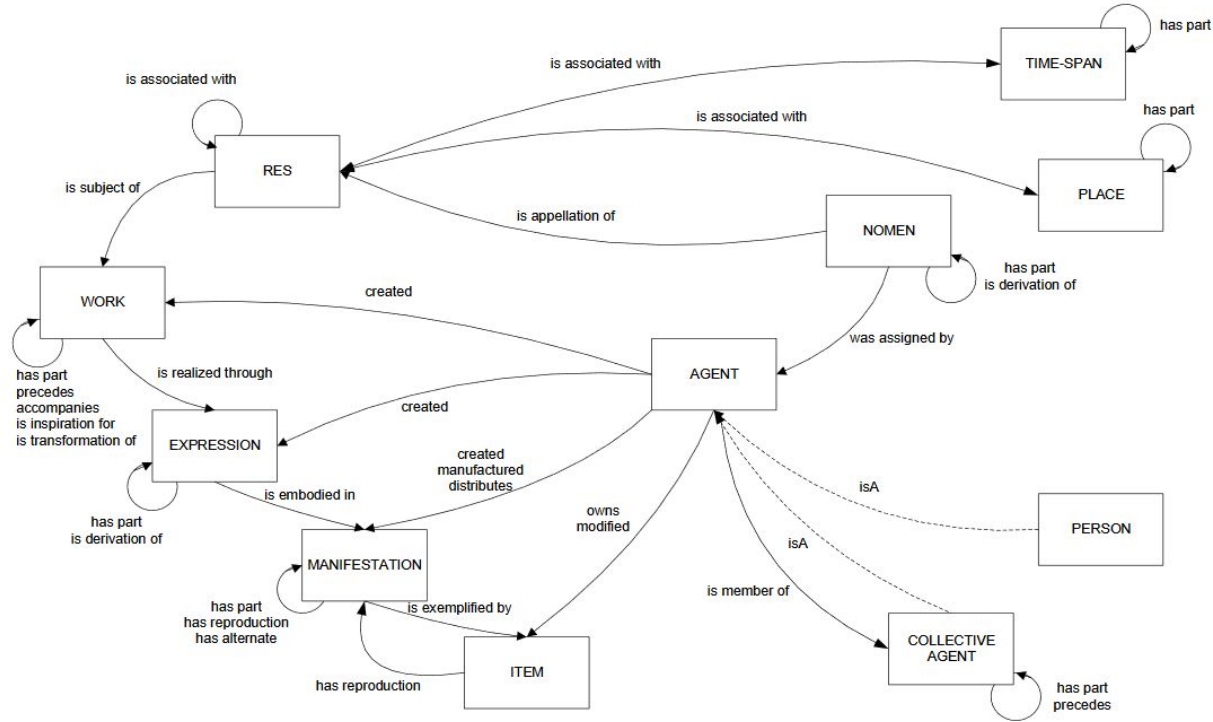
# CAPTURING INTANGIBLE HERITAGE IN DATA VOCABULARY | CIDOC CRM

## DOCUMENTATION and REFERENCES

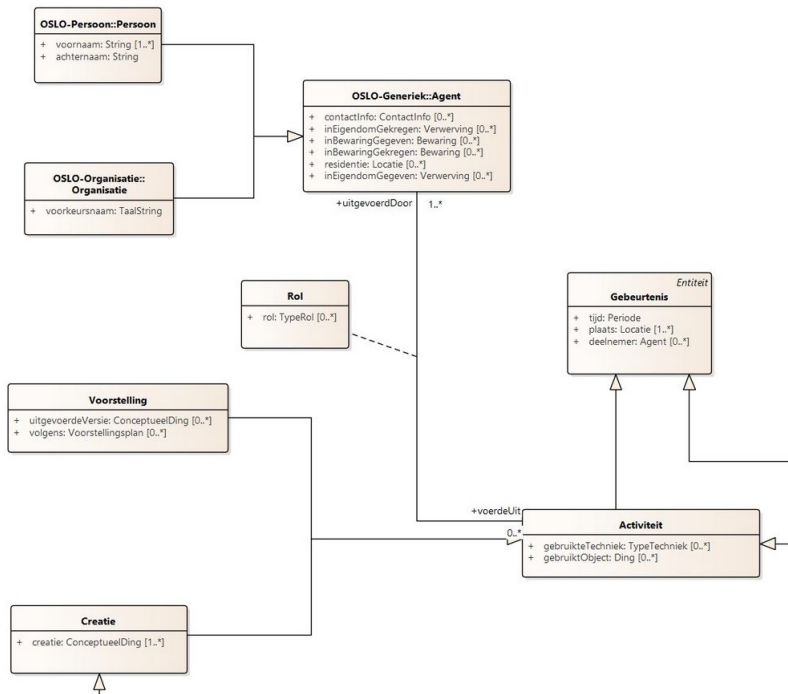




# CAPTURING INTANGIBLE HERITAGE IN DATA VOCABULARY | IFLA LRM



# CAPTURING INTANGIBLE HERITAGE IN DATA VOCABULARY | OSLO CULTUREEL ERFGOED



In dit document wordt correct gebruik van de volgende entiteiten toegelicht:

- [Activiteit](#) | [Agent](#) | [Bewaring](#) | [Classificatie](#) | [Conceptie](#) | [Conceptueel Ding](#) | [Conditiebeoordeling](#) | [Creatie](#) | [Curatie](#) | [Ding](#) | [Entiteit](#) | [Expressie Creatie](#) | [Gebeurtenis](#) | [Gecureerde Collectie](#) | [Informatie Object](#) | [Materieel Ding](#) | [Mensgemaakt Kenmerk](#) | [Mensgemaakt Object](#) | [Meting](#) | [Opname](#) | [Opnamesessie](#) | [Opnamewerk](#) | [Organisatie](#) | [Persoon](#) | [Productie](#) | [Publicatie](#) | [Publicatie Expressie](#) | [Publicatiewerk](#) | [Rol](#) | [Temporele Entiteit](#) | [Toekenning](#) | [Toevoeging\\_Deel](#) | [Verhuis](#) | [Vernietiging](#) | [Verwerving](#) | [Verwijdering\\_Deel](#) | [Voorstelling](#) | [Voorstellingsplan](#) | [Werk](#) | [Wijziging](#) | [Zelfstandige Expressie](#) |

In dit document worden de volgende datatypes toegelicht:

- [Adresvoorstelling](#) | [Beschrijving](#) | [Conditie](#) | [Contactinfo](#) | [Dimensie](#) | [Getal](#) | [Identificator](#) | [Locatie](#) | [Periode](#) | [Standaard Eenheid](#) | [Waarde](#) |

# CAPTURING INTANGIBLE HERITAGE IN DATA VOCABULARY | WIKIDATA



- Main page
- Wikimedia News
- Translations
- Recent changes
- Random page
- Help
- Batal
- Community
- Wikimedia Resource Center
- Wikimedia Forum
- Mailing lists
- Requests
- Subjtion
- Reports
- Research
- Planet Wikimedia
- Beyond the Wiki
- Meet Wikimediaans
- Events
- Movement affiliates
- Donate
- Tools
- What links here
- Related changes
- Special pages
- Permanent link
- Page information
- Cite this page
- Wikidata item
- Print/export

Content page | Discussion | English | Not logged in | Talk | Contributors | Create account | Log in | Read | Edit | View history | Search Meta

## Wiki Loves Living Heritage

Translate this page

Other languages: Bahasa Indonesia • British English • Bân-lâm-gú • English • Papiamentu • Türkçe • français • italiano • polski • suomi • pyccшй • таҕаһа / tatarça • العربية • हिन्दी • ગુજરાતી • বাংলা • 中文 • 日本語 • 한국어



## Wiki Loves Living Heritage photo contest in Finland

2023-05-09-2023-09-10

Welcome | Introduction | Join | Living heritage around the world | Get inspired

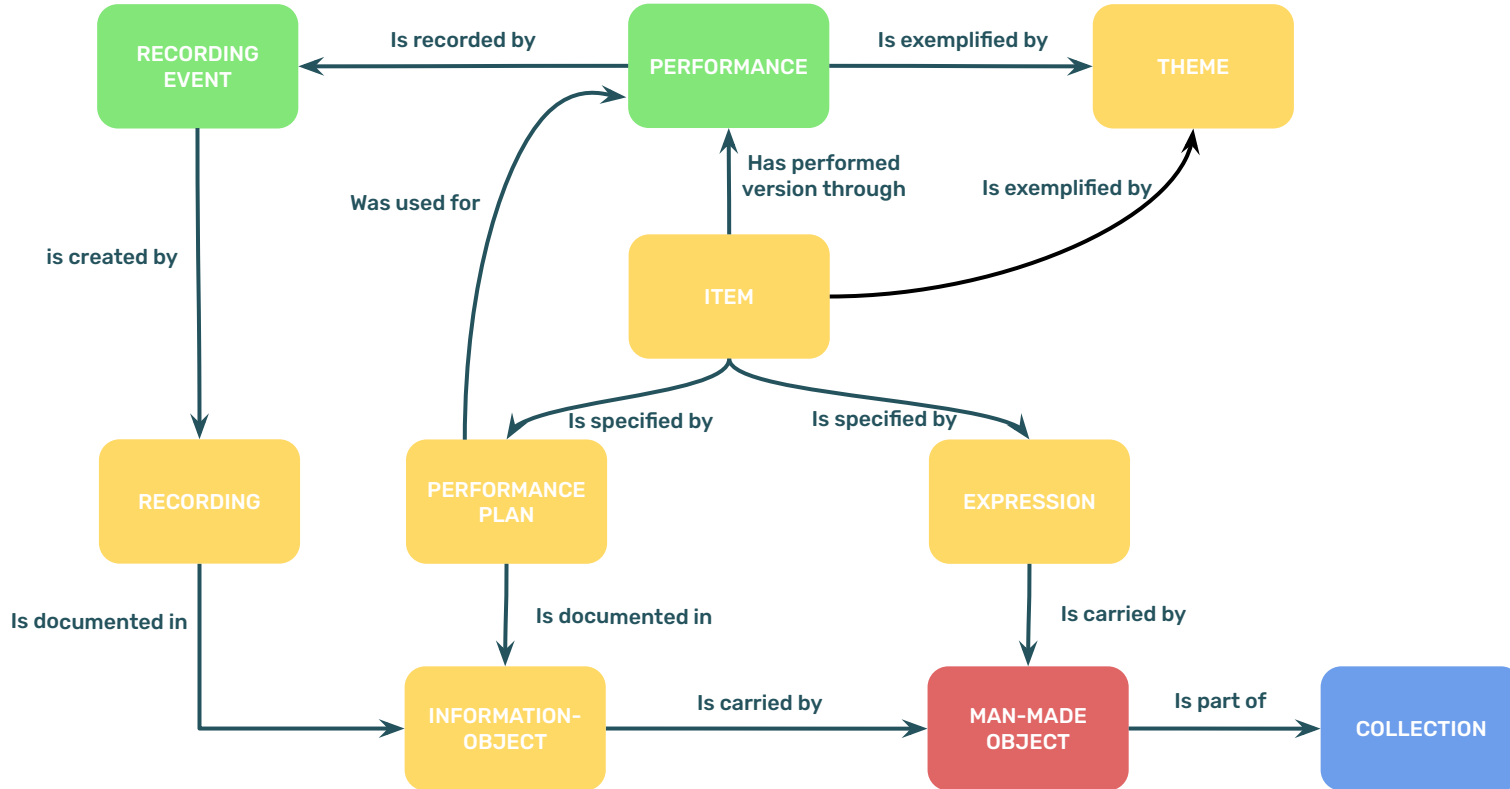
## Welcome to Wiki Loves Living Heritage!

Year 2023 celebrates Living Heritage<sup>2</sup> globally with the 20th anniversary of the UNESCO 2003 Convention for the Safeguarding of the Intangible Cultural Heritage. **Wiki Loves Living Heritage** invites heritage communities, Wikimedia volunteers, safeguarding organizations and Intangible Cultural Heritage focal points around the world to document and share Living Heritage together.

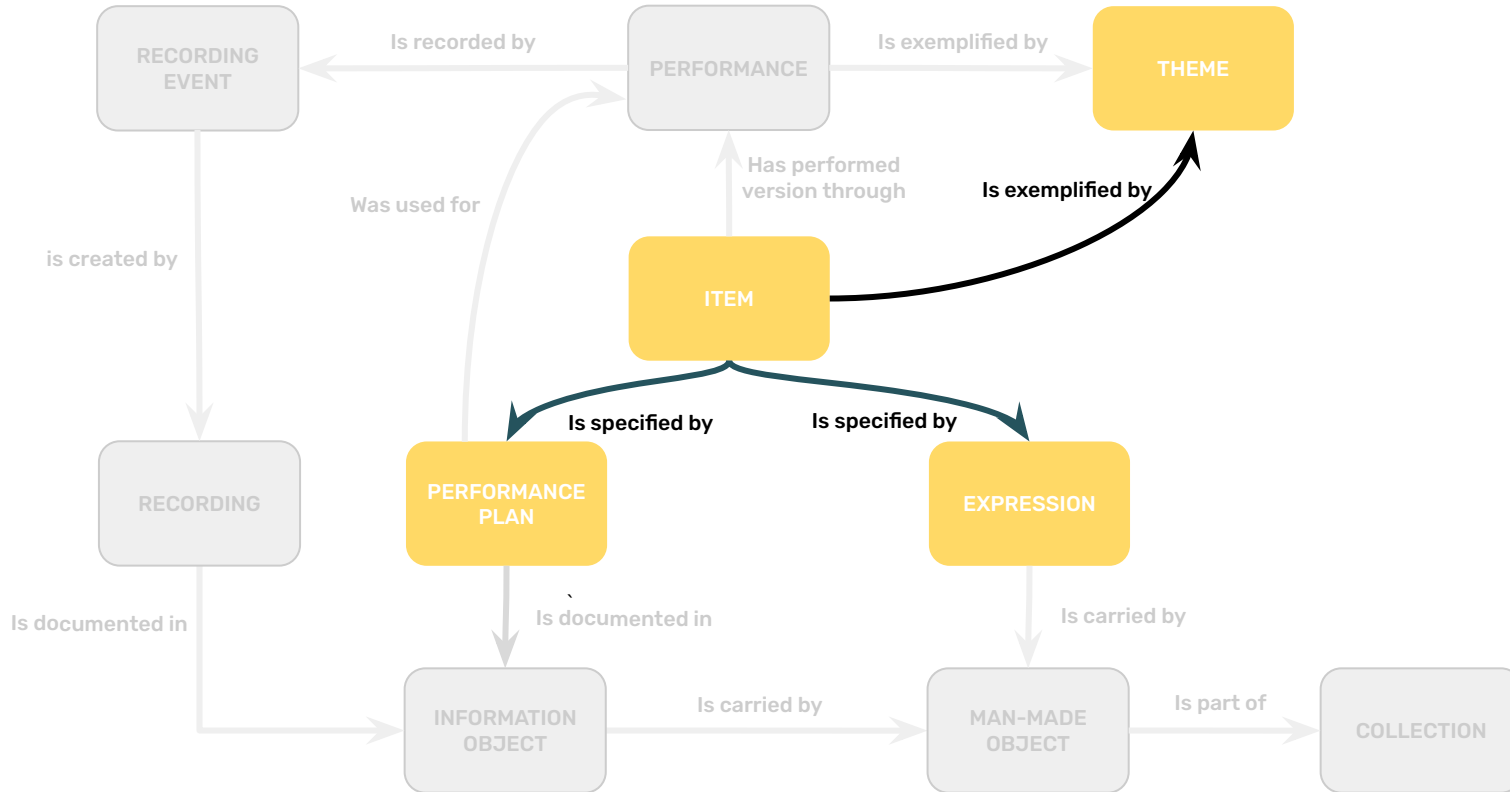
## Data to import for an element [ edit ]

- **label** – the name of the element, the best-known title. Add it in all languages that you know and in English. Providing the English label is necessary to allow translating it to other languages. See the recommendations about writing the labels.
- **description** – the description is not a sentence but a passage without a full stop at the end. Providing the English description is necessary to allow translating it to other languages.
- **aliases** – Add alternative names as aliases, in the corresponding language.
- **instance of (P31)** – Choose the type or heritage element in question. Do not use [intangible cultural heritage \(Q59544\)](#), but the most precise type you can find in Wikidata for the element. You can also create it, if you are confident a proper one does not exist. Use the keywords and categories of the inventory as an inspiration. Ideally, the type is hierarchically related to [intangible cultural heritage \(Q59544\)](#), but this is not always the case. See more about [keywords](#).
- **subclass of (P279)** – Sometimes it is useful to add the heritage element to a hierarchy of elements, such as in the case of a local variant of a tradition. You can also create subclasses to the element you are adding. See the section about [subclasses](#) for additional information. Do not use [intangible cultural heritage \(Q59544\)](#) here either.
- **intangible cultural heritage status (P3259)** – Use the inventory item as the value. Add also the following qualifiers:
  - **country (P17)** – The country that has included the element in the inventory.
  - **operating area (P2541)** – If the inventory is subnational. Add both.
  - **start time (P580)** – The year or date when the element was added to the inventory.
  - **title (P1476)** – Add all the titles in the different languages that have been used in the inventory.
  - **inventory number (P217)** – If the inventory has and ID for the element, but it does not have a property in Wikidata.
  - **described at URL (P973)** – Although this is repetition, this clearly associates the web page of the heritage element to the designation. Language cannot be expressed, so one needs to pick one of the languages, English preferred. Adding the information here is experimental.
  - The source statement may also have the same url as [reference URL \(P854\)](#), see the section below.
- **described at URL (P973)** – The page of the element in the inventory website. For all of the language versions, add the following qualifiers:
  - **language of work or name (P407)** – The language of the page
  - **title (P1476)** – The title of the page (and the element) in the language
- **The possible ID** in an inventory or list, such as UNESCO ICH ID (P10221).
- **maintained by WikiProject (P6104)**: WikiProject Intangible Cultural Heritage (Q112898263)

# CAPTURING INTANGIBLE HERITAGE IN DATA APPLICATION PROFILE | CORE PROFILE

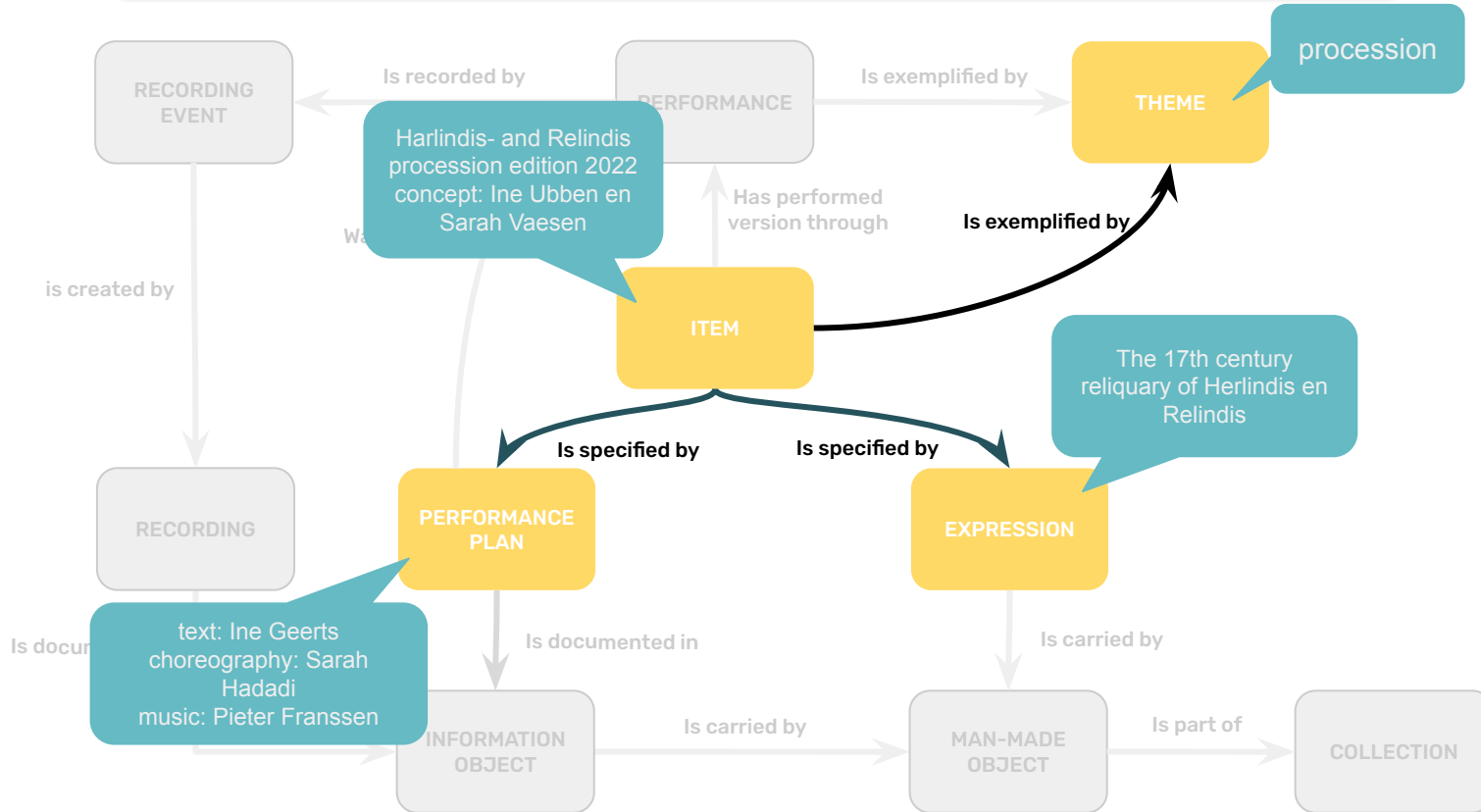


# CAPTURING INTANGIBLE HERITAGE IN DATA APPLICATION PROFILE | THEME - ITEM - EXPRESSION



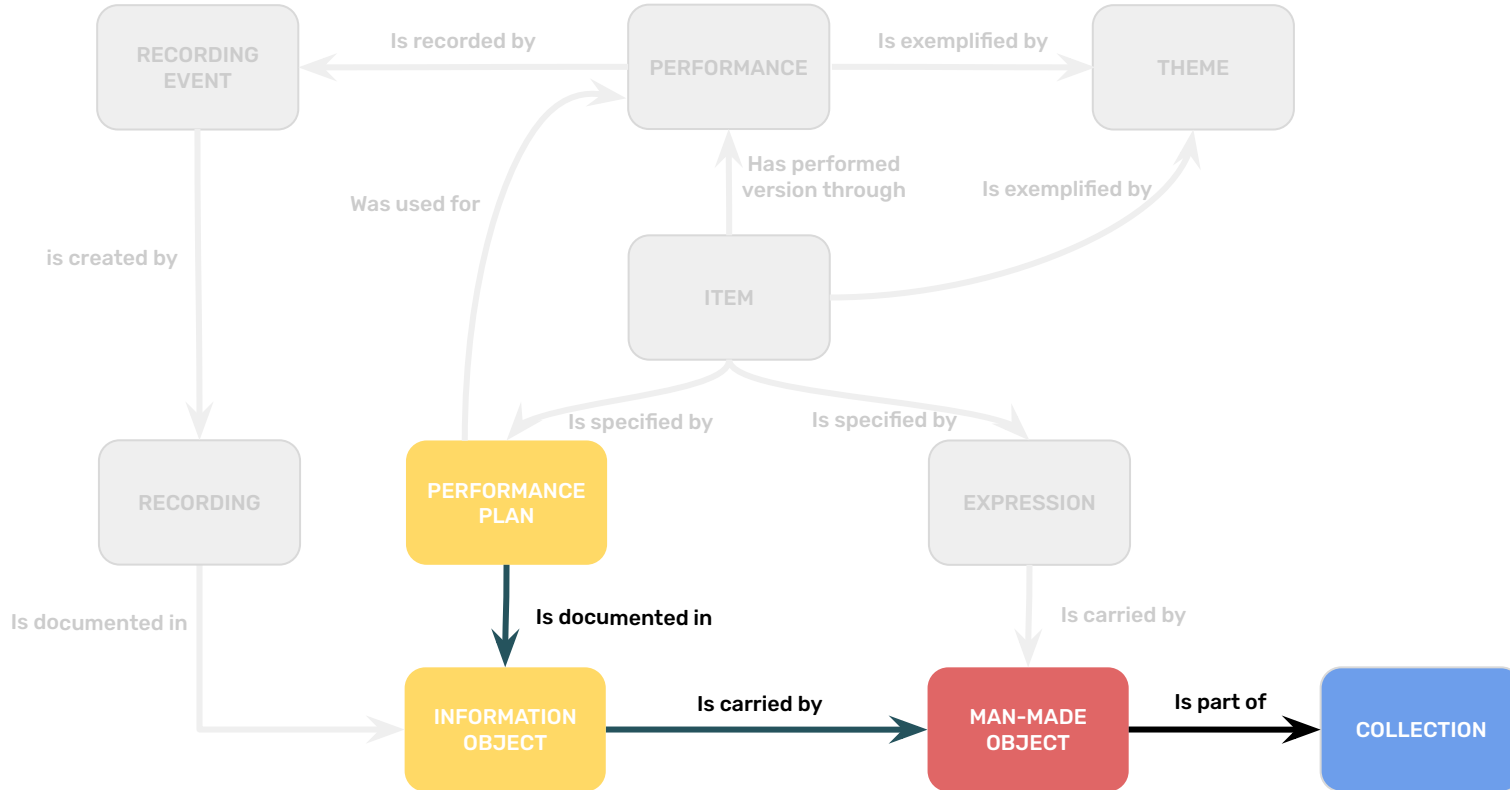
# CAPTURING INTANGIBLE HERITAGE IN DATA

## APPLICATION PROFILE | THEME - ITEM - EXPRESSION



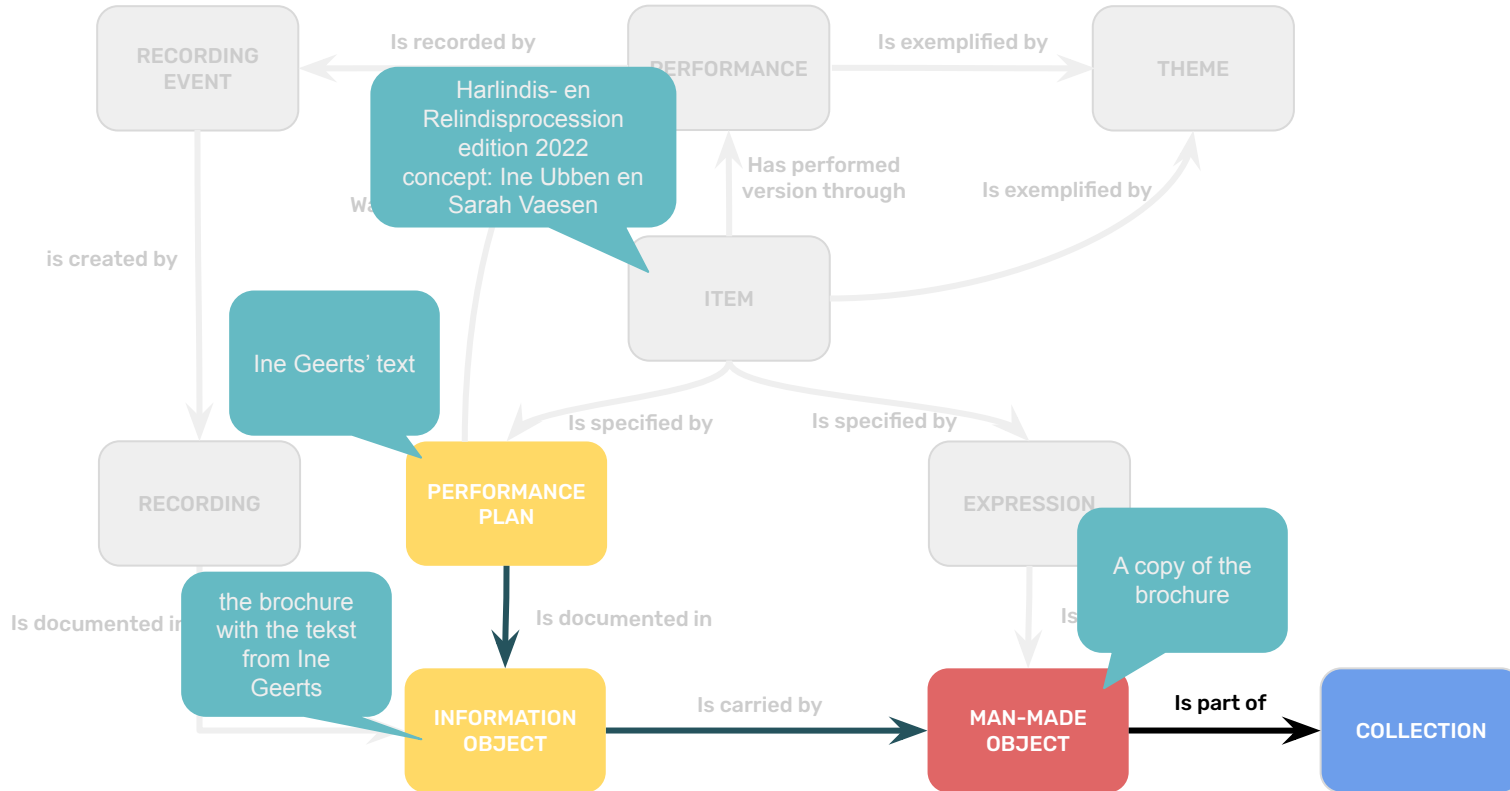
# CAPTURING INTANGIBLE HERITAGE IN DATA

## APPLICATION PROFILE | INFORMATION - MAN-MADE OBJECTS



# CAPTURING INTANGIBLE HERITAGE IN DATA

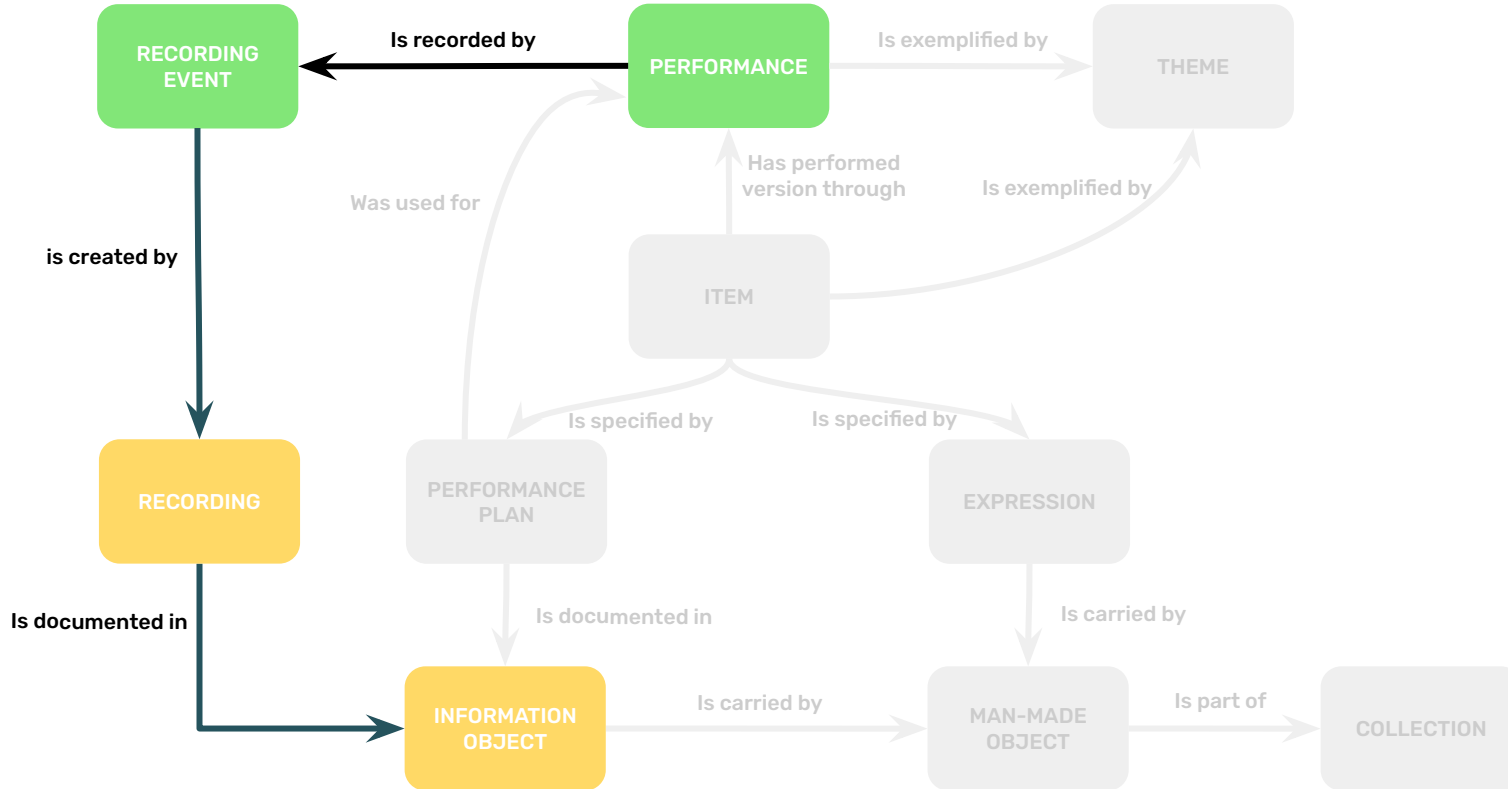
## APPLICATION PROFILE | INFORMATION - MAN-MADE OBJECTS





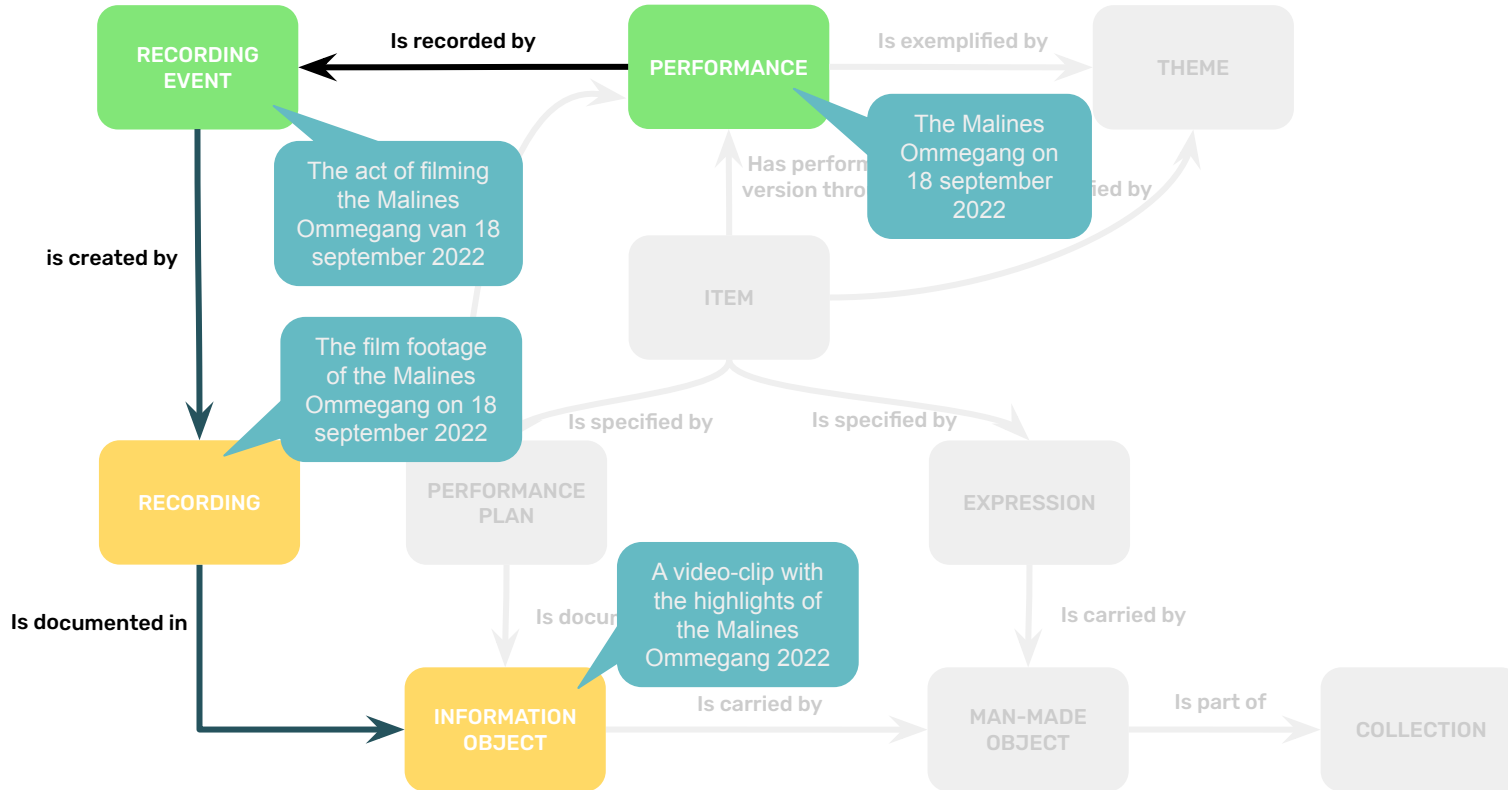
# CAPTURING INTANGIBLE HERITAGE IN DATA

## APPLICATION PROFILE | PERFORMANCES - RECORDINGS

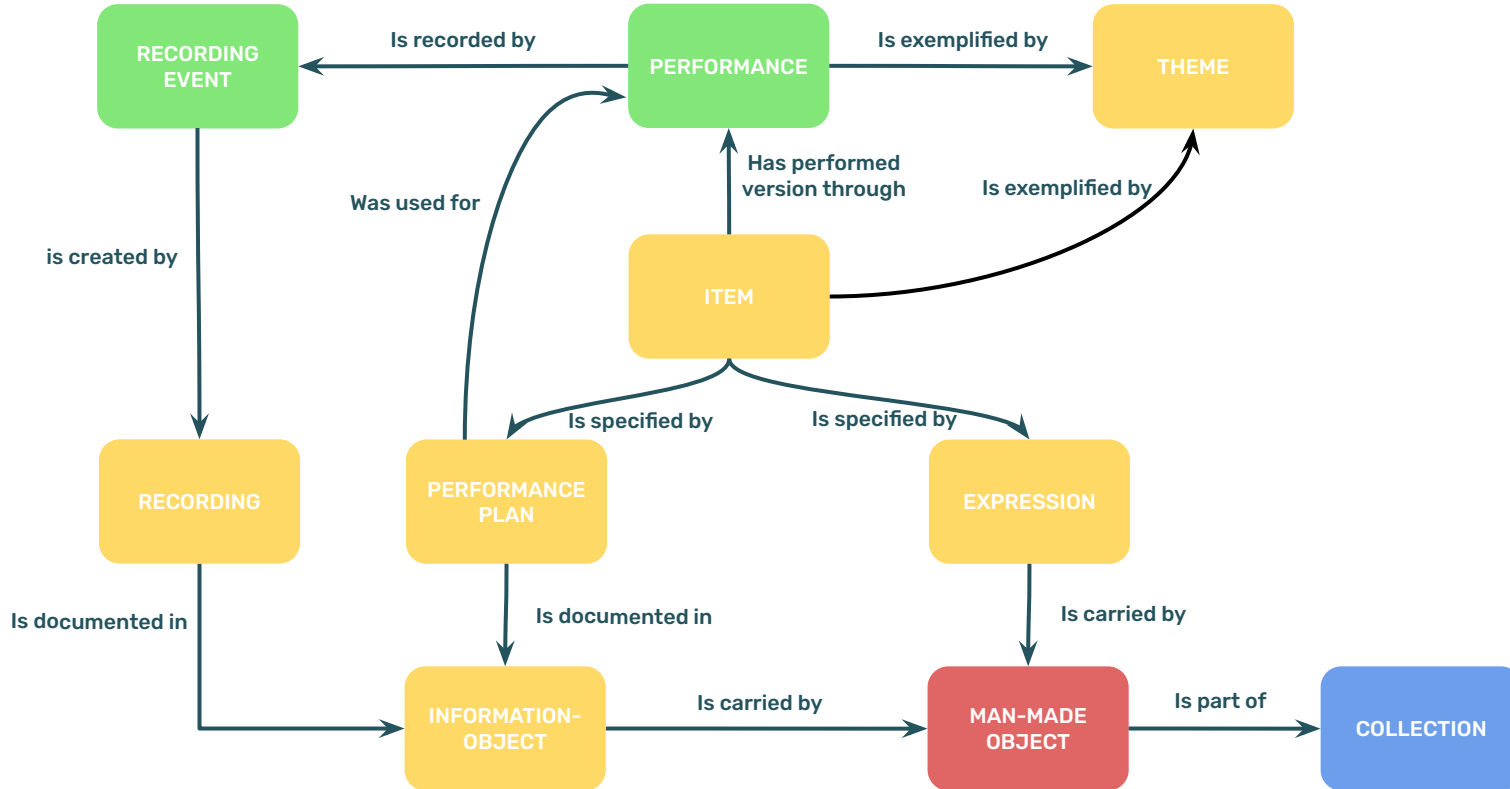


# CAPTURING INTANGIBLE HERITAGE IN DATA

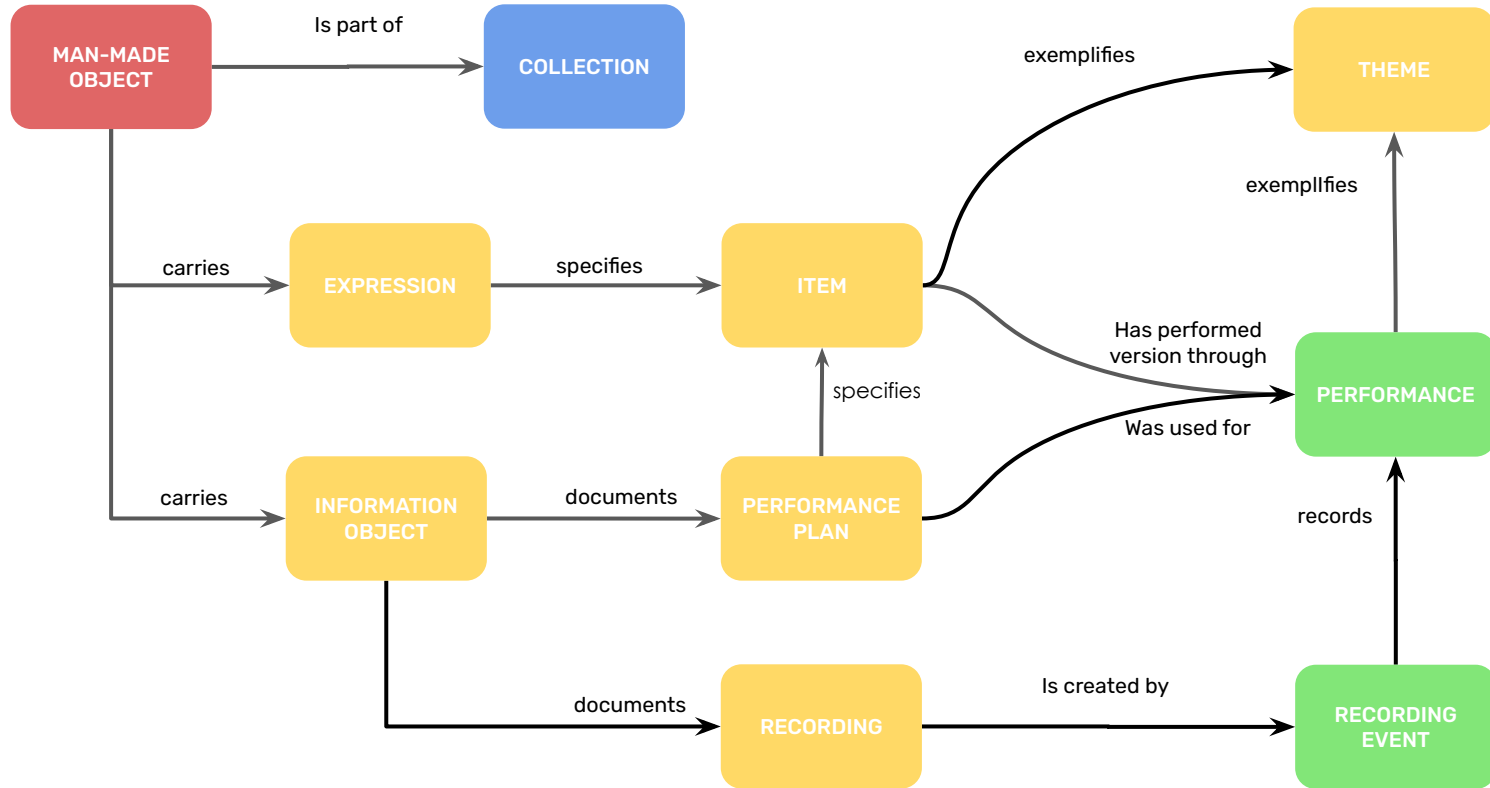
## APPLICATION PROFILE | PERFORMANCES - RECORDINGS



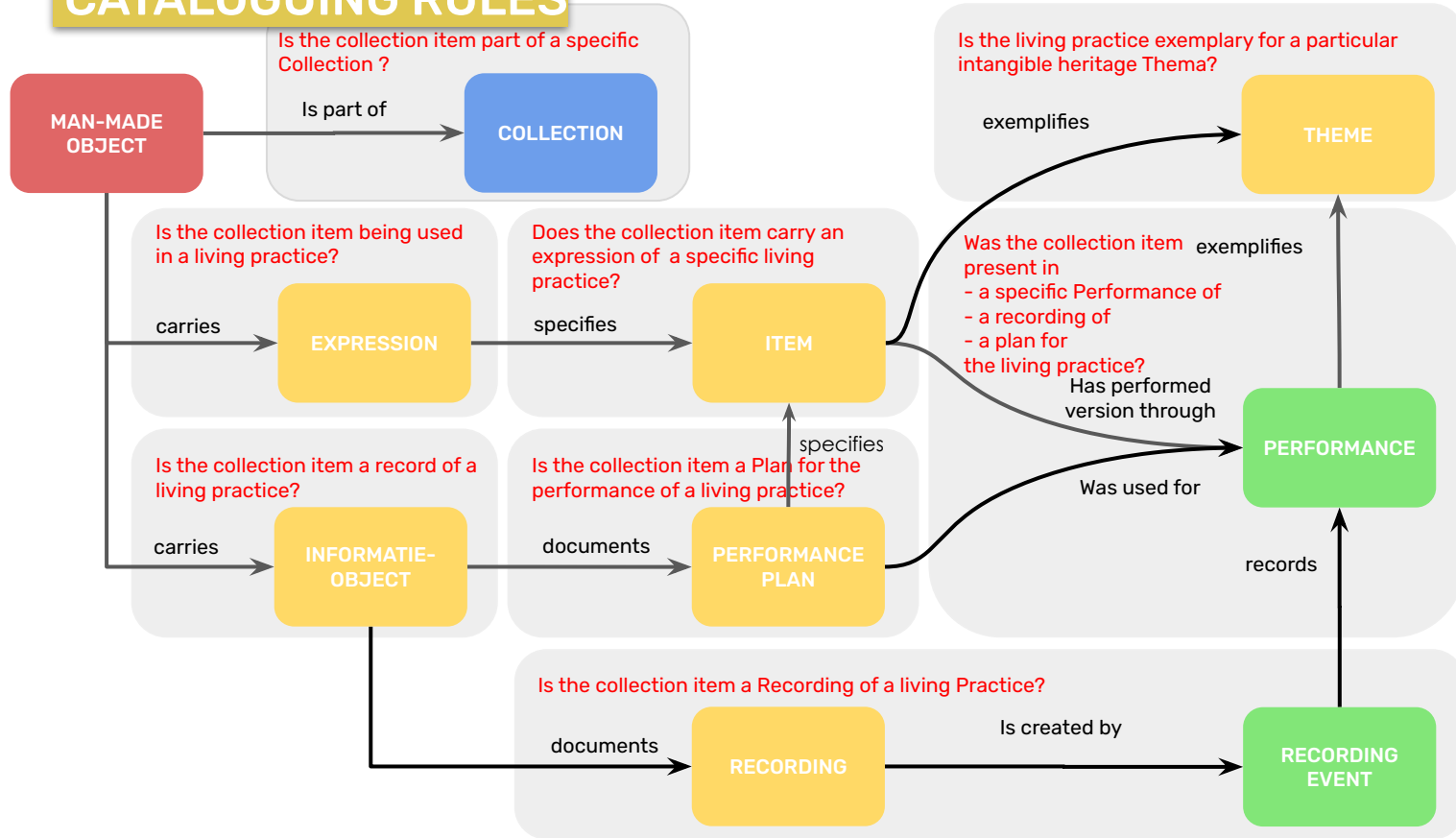
# CAPTURING INTANGIBLE HERITAGE IN DATA CATALOGUING RULES



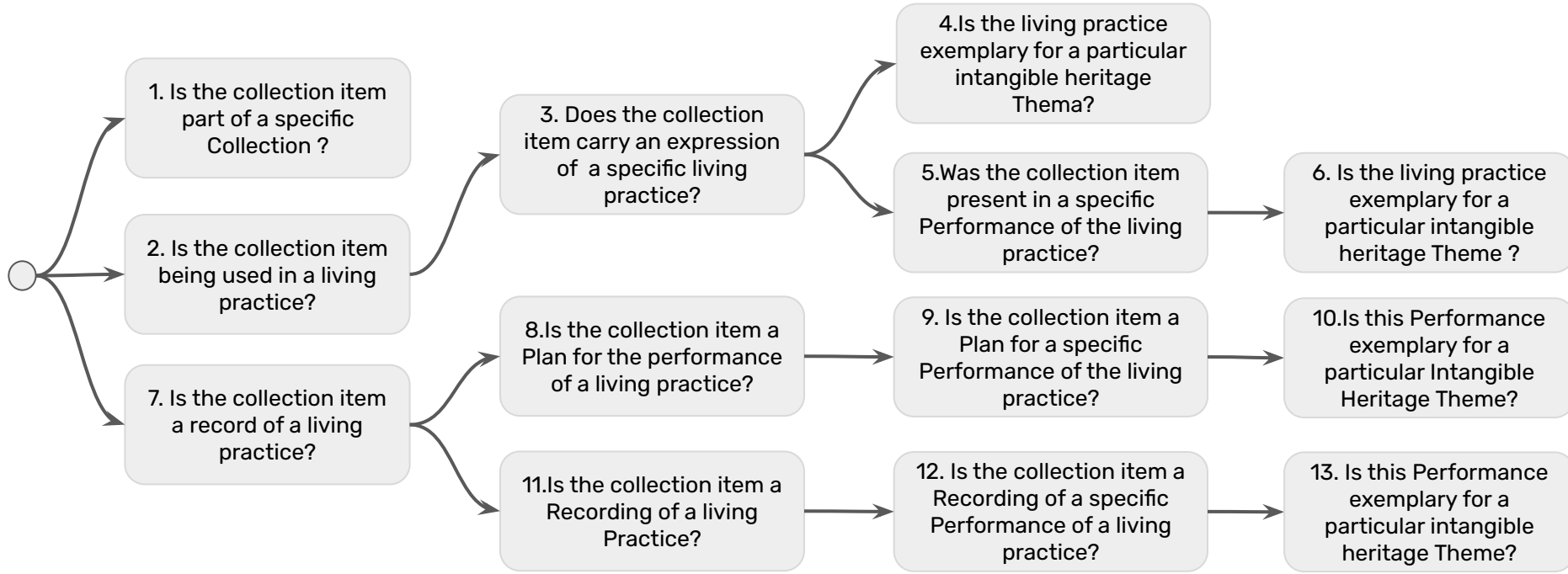
# CAPTURING INTANGIBLE HERITAGE IN DATA CATALOGUING RULES



# CAPTURING INTANGIBLE HERITAGE IN DATA CATALOGUING RULES



# CAPTURING INTANGIBLE HERITAGE IN DATA CATALOGUING RULES | PROCEDURE



# CAPTURING INTANGIBLE HERITAGE IN DATA CATALOGUING RULES | MANUAL

## 0. Identify the collection item.

Record following information elements:

- the **object number** of a collection item - [Waarde objectnummer](#)
- the **title** of a collection item - [Titel / Korte beschrijving](#)
- the **maker** of a collection item - [Naam vervaardiger](#)
- het **creation date** of a collection item - [Begindatum / Einddatum](#)
- the **creation location** of a collection item - [Naam plaats vervaardiging](#)

## 1. Is the collection item part of a specific *Collection*?

if **yes**; Record following information elements:

- the **name** of the *Collection* - [Naam collectie](#)
- the **name** of the *Curating Institution* - [Naam bewaarinstelling](#)

## 2. Is the collection item being used in a living practice?

if **yes** → go to question 3

if **no** → go to question 7

## 3. Does the collection item carry an expression of a specific living practice?

if **yes**, Record following information elements:

- the **name** of the specific **living practice** - [Naam geassocieerd concept / Type geassocieerd concept](#)
- (if applicable) the **originator** of the specific living practice
- **when** the living practice originated



[https://www.projectcest.be/wiki/Publicatie:Invulboek\\_objecten](https://www.projectcest.be/wiki/Publicatie:Invulboek_objecten)

## Naam geassocieerd concept

<b>Veld</b>	<b>naam geassocieerd concept</b>
<b>Definitie</b>	Het veld 'naam geassocieerd concept' bevat een concept geassocieerd met een object of groep objecten.
<b>Invulregels</b>	Gebruik een enkele term, zonder leestekens of hoofdletters. Handhaaf een lijst met standaardbepalingen. liefde vrede
<b>Systemen</b>	<b>Adlib (Erfgoedinzicht):</b> Objecten > Associaties > Geassocieerd onderwerp > <b>Onderwerp</b> (kp) Dit veld is herhaalbaar. Het onderwerp is een gecontroleerde term uit het bestand "Thesaurus".
<b>Systemen (2de poging)</b>	
<b>Standaarden</b>	<b>Spectrum:</b> <a href="#">Geassocieerd concept (-)@</a>

Categorieën: [Invulboek objecten](#) | [Invulboek objecten - velden](#)

# CAPTURING INTANGIBLE HERITAGE IN DATA

## NEXT STEPS

- review specificatie v2
- extension: factual information > context - motivations
- JSON-LD serialisation
- Implementation scenarios



# **IN PRACTICE: experimental examples from heritage organisations in Flanders (BE)**

Eva Dierckx

Huis van Alijn

Annelies Valgaeren

Heritage collections city of Antwerp



# The art of puppetry

Digital collection registration

2022-2023



# Huis van Alijn and its scope



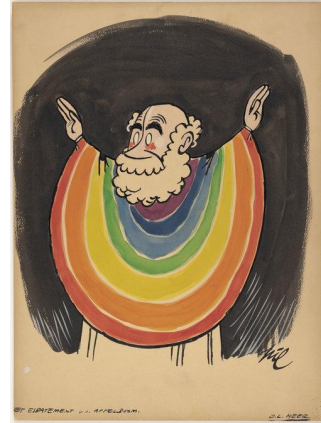
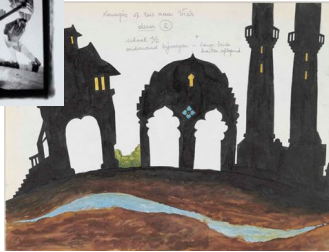
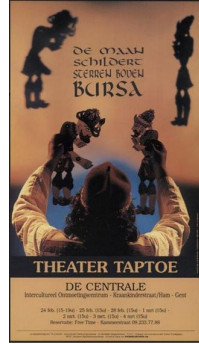
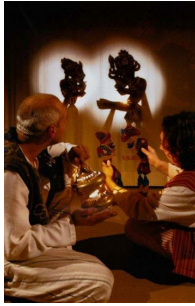
't Spelleke van Folklore, Museum voor Volkskunde, Ghent, 1987

- The House of Alijn explores, researches and preserves memories on daily live (from the 20<sup>th</sup> century onwards)
- The material and digital collections document intangible heritage and practices
- Collaboration with heritage communities
- Puppetry historically linked to the museum + Large acquisition of a puppetry collection (via CEMPER, 2021)

# Puppetry collection

## Improve and increase **collection registration**:

- Digitalising and in-depth registration of our collection, according to standards.  
Publication of a dataprofile  
[www.projectcest.be/wiki/Publicatie:Invulboek\\_objecten/Profielen/HuisVanAlijn\\_Poppenspel](http://www.projectcest.be/wiki/Publicatie:Invulboek_objecten/Profielen/HuisVanAlijn_Poppenspel)
- Part of the collection is still being actively played with by in-house puppeteers
- The collection composes of digital and material items.  
Varied media: objects, photos, moving images, documentation
- Scope is to document intangible heritage, register links/network within collection.
- Experiment with implementation of OSLO standards (based on CIDOC-CRM)  
(in collaboration with meemoo):  
[www.projectcest.be/wiki/OSLO\\_in\\_de\\_praktijk\\_bij\\_Poppenspel\\_tot\\_leven\\_gewekt](http://www.projectcest.be/wiki/OSLO_in_de_praktijk_bij_Poppenspel_tot_leven_gewekt)



*De Maan Schildert sterren boven Bursa, Theater Taptoe, 2001*

*Het esbatement van de appelboom, Mechels Stadspoppentheater, ca. 1965*

## Focus on intangible heritage

- Puppetry as a living practice
- Audio-visual captation of practices within collection
- Interviews with puppeteers in collection
- The collection as a reference that documents evolutions of this heritage practice



*Demonstration of Turkish shadowplay by Luk De Bruyker, 2022*



*How to make a puppet, Poppentheater Festival Ghent, 2023*



*Pierke van Alijn filmed from different angles simultaneous , 2022, Ghent*

## Heritage community

- Involve and guide
- Maintain contact, create network
- Encourage reuse of collection?



*Meta-Pierke by Eleni Kamma, Kunsthall Ghent, 2023*



## Contact & Info?

<https://huisvanalijn.be/nl/digitale-inhaalbeweging-poppenspel>

### Projectmedewerker

Eva Dierckx

[Eva.dierckx@stad.gent](mailto:Eva.dierckx@stad.gent)

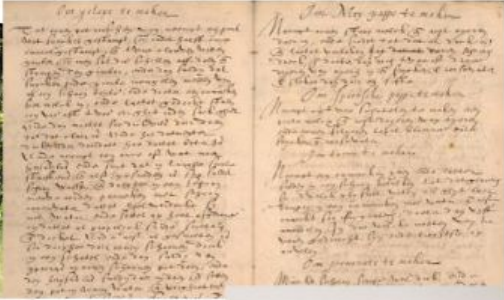
### Digitaal strateeg

Thomas Desmedt

[Thomas.Desmedt@stad.gent](mailto:Thomas.Desmedt@stad.gent)

HERITAGE CITY OF  
ANTWERP

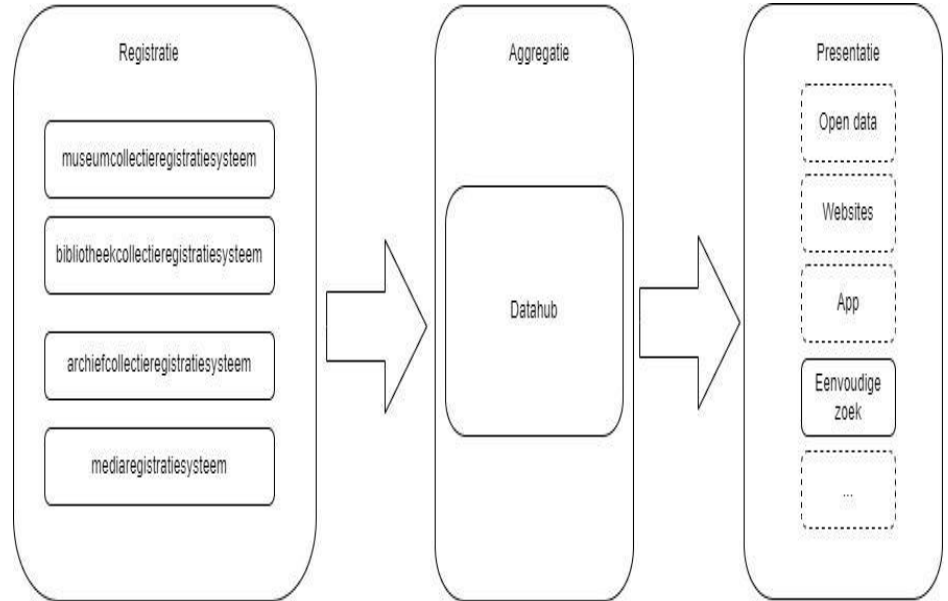
# Unique diversity



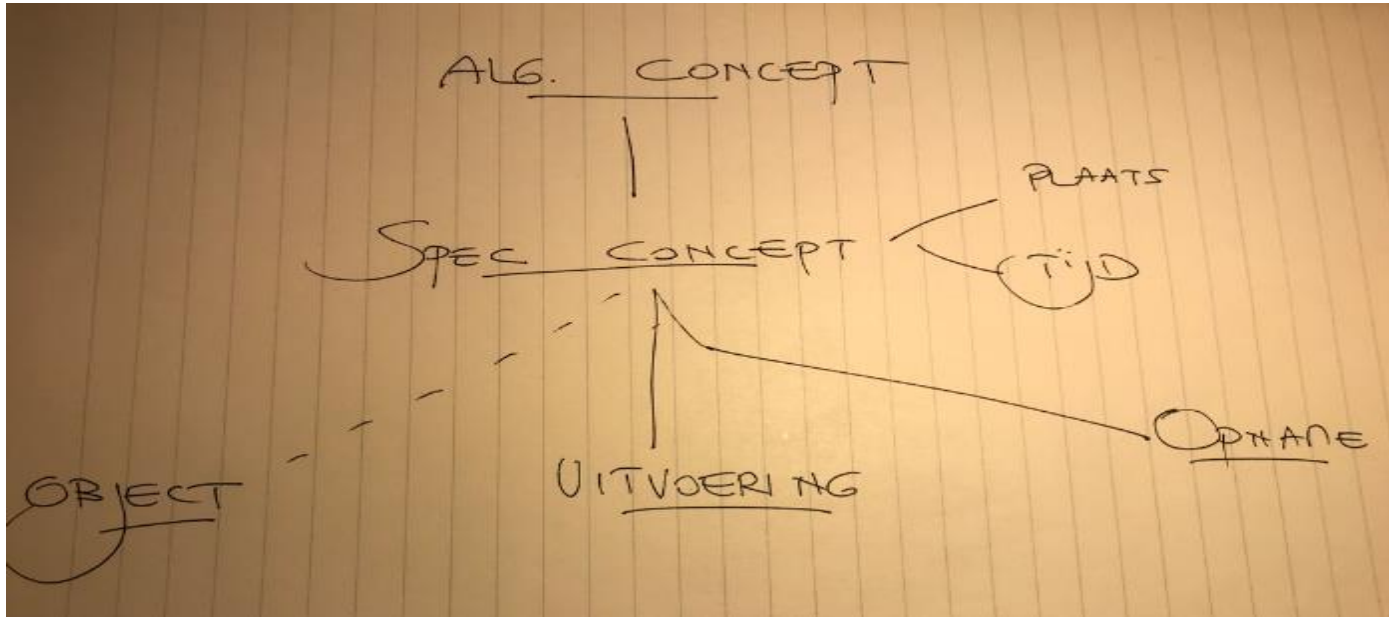


# STARTING POINT

- New DAMS
  - Not collection-related images and videos?
- Telling 'stories'
  - Craftmanship
- 'datahub'
  - CIDOC CRM and OSLO mapping



# Objects versus concepts: craftsmanship/traditions versus stories



# 1. REGISTRATION

- Collection management system
  - which?
- How?
  - Alijn and Busleyden

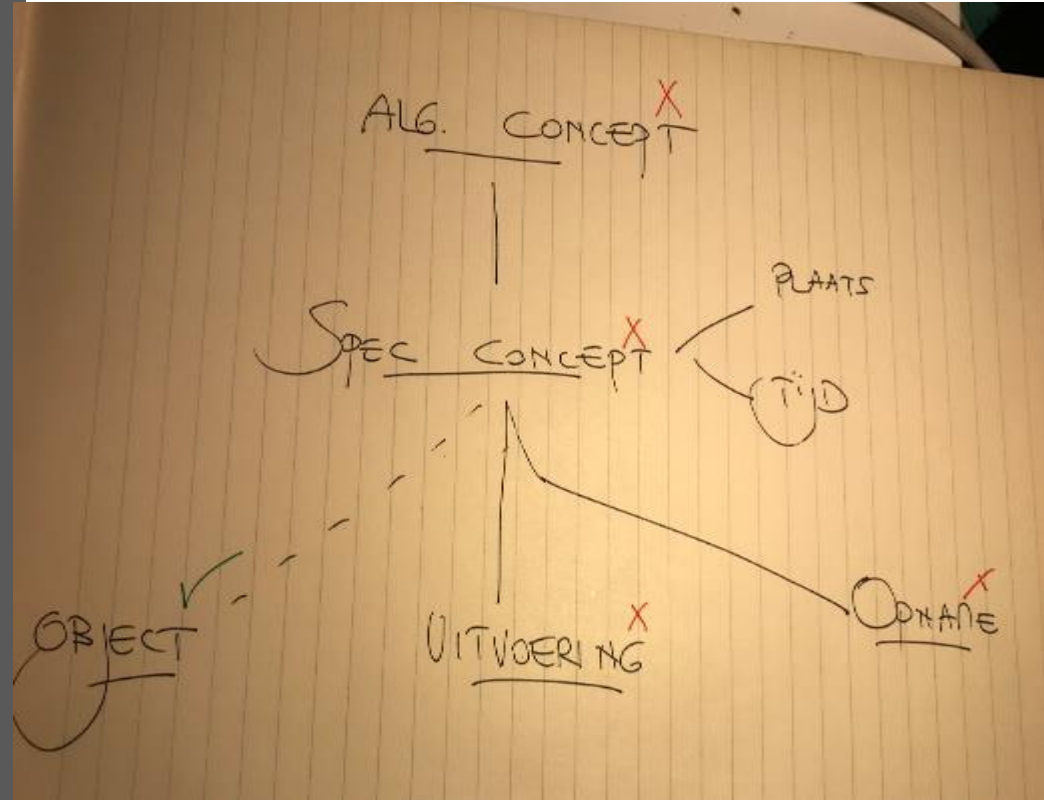
Different datasets:

Objects

Thesaurus ~ Busleyden

Use

Image documentation

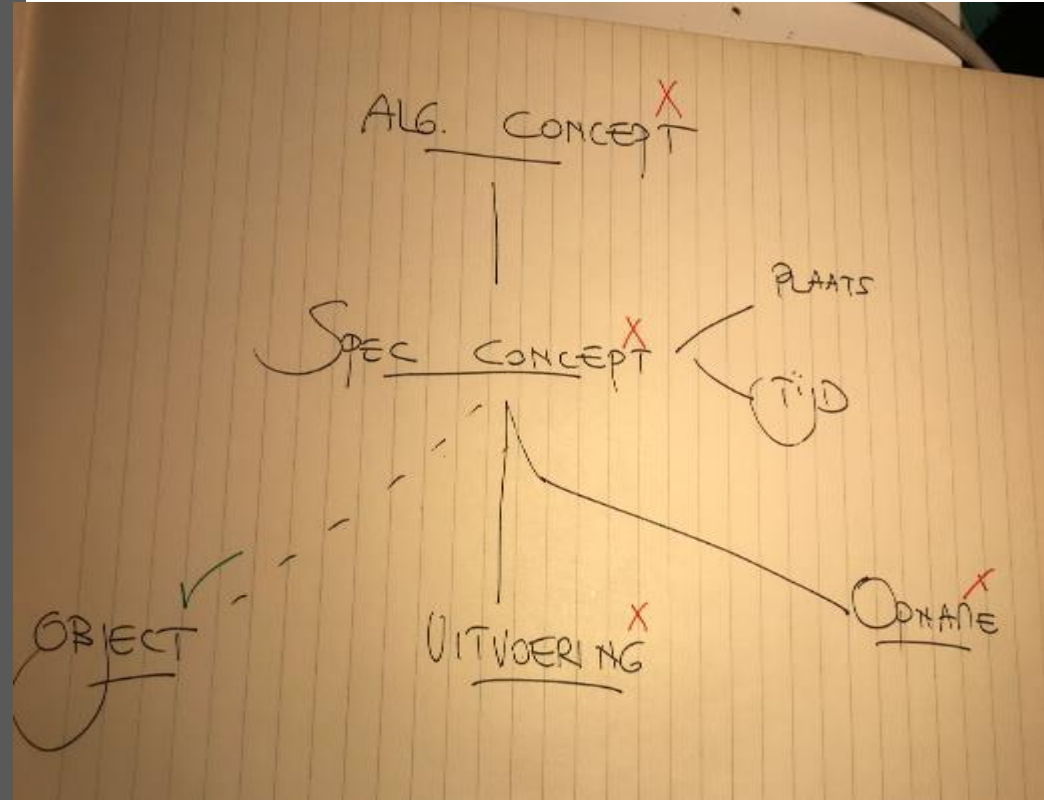




SYSTEM SAYS NO

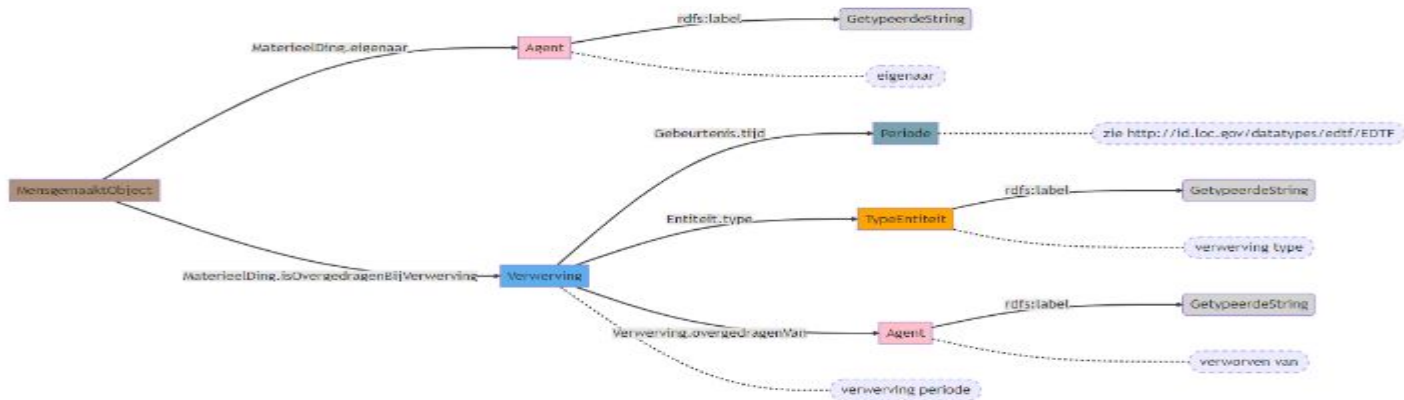
Single overview?

Too little (useful)  
metadata



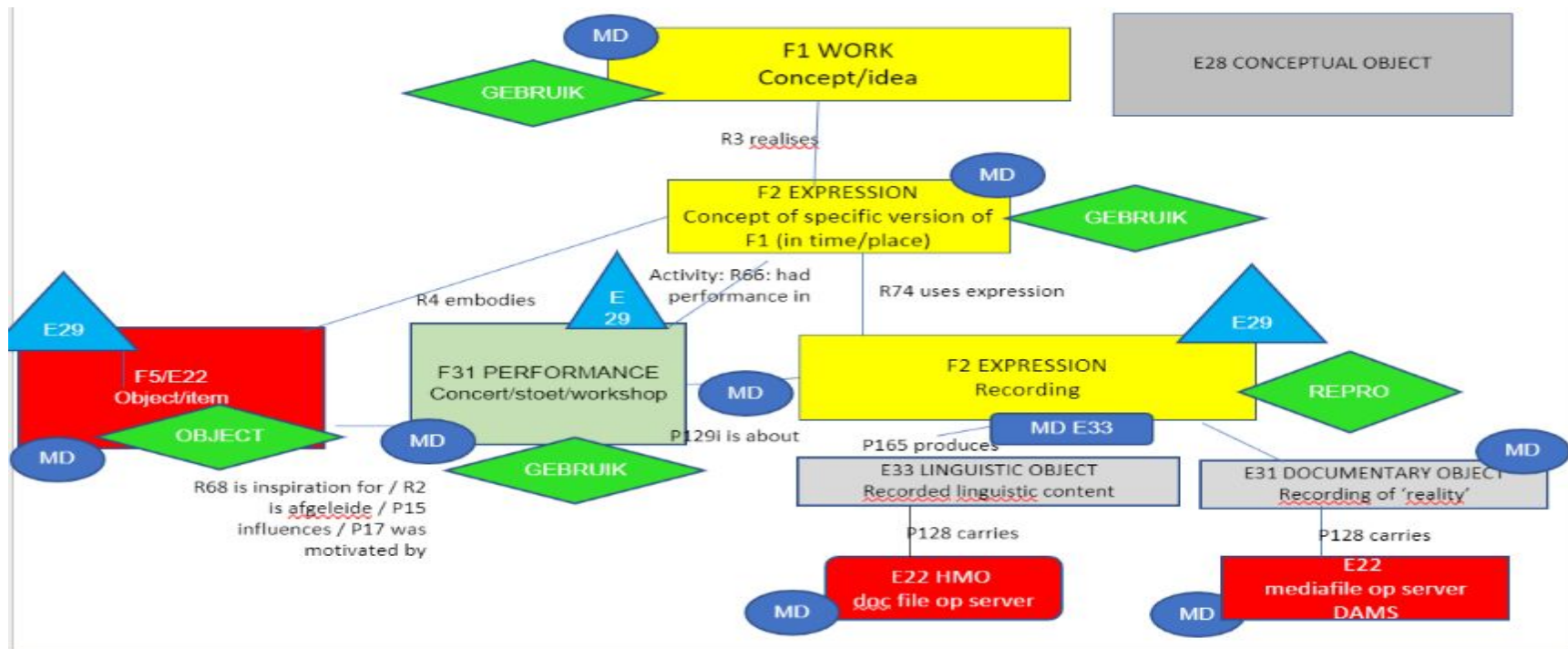
## 2. DATAHUB

### What we have...



# DATAHUB

## Additionally ...



# ROADMAP



## ... towards an international standard for recording living heritage in museums' collection management systems



Translation  
report



Questionnaire



Synthesis questionnaire  
input  
August 2023



WG MEETING  
CIDOC MEXICO  
September 24, 2023



Capturing intangible cultural heritage into data: towards a standard for recording living heritage in collection management systems

CIDOC ICH Working Group

We hope to see you in Mexico!

**CIDOC** **MX**  
**23**

**ICOM** international  
council  
of museums  
Belgium Flanders

 WORKSHOP  
INTANGIBLE  
HERITAGE <sup>BE</sup>

**M**  
**CIDOC**